

 **PROLIFT**  
HANDLING LTD

## Lifting Davits and Structures

- A-Frame Gantries
- Davits
- Davit Cranes
- Crane Systems
- Jib Cranes
- Overhead Handling Systems

## REID PORTAGANTRY RAPIDE®

Our unique and innovative PORTAGANTRY RAPIDE is a height-adjustable, foldable aluminium gantry designed for rapid deployment. Capable of an impressive WLL of up to 1,000kg. This system can be assembled and disassembled by just one person within a minute without the need for any tools. The PORTAGANTRY RAPIDE is the perfect solution for Confined Space Access scenarios due to its unique features and ability to lift equipment and personnel.



### Key features

- EN795:2012 Certified
- ATEX Certified
- Can support goods and personnel lifting;
  - Goods WLL of up to 1,000kg
  - Personnel WLL of up to 500kg
- Suitable for up to 3 persons for fall protection applications
- Integrated wheel design that folds with the frame for ease of transportation
- Available in 3 height-adjustable versions (up to 2.9m to the lifting eye)
- Can accommodate a range of beam lengths up to 4m

250-1,000kg  
WLL1-2 Person  
Assembly37-69kg  
Flat PackEn795  
CertifiedAtex  
Certified

- Anodised for increased corrosion resistance
- Engineered designs and bespoke sections reduce weight, providing lightweight portability

### Configurations

- The PORTAGANTRY RAPIDE is available in a range of configurations and can be customised in line with specific requirements (subject to WLL rating).

### Features & Performance

Accreditations, Certifications & Standards	PGR500	PGR1000
EN795:2012	✓	✓
PD CEN / TS16415:2013	✓	✓
ANSI Z359.18-17	✓	✓
AS/NZS 5532:2013	✓	✓
ATEX Certified [Zone 2]	✓	✓
ATEX Certified [Zone 1]	×	Optional
IRATA	✓	✓
<b>Capacity</b>		
Maximum Goods Lifting [kg]	500	1,000
Maximum Personnel Lifting [kg]	250	500
Fall Arrest [Persons]	3	3
<b>Dimensions</b>		
Minimum Height of Lift (HOL) [mm]	1,450	1,430
Maximum Height of Lift (HOL) [mm]	2,920	2,880
<b>Beam Options</b>		
2.0m	✓	✓
2.3m	✓	×
3.0m	×	✓
4.0m	✓	✓
<b>Trolley Options</b>		
Master Link	✓	✓
Close Coupled	✓	✓
Sheave Carrier	✓	✓
<b>Features</b>		
Winch Capable	✓	✓
Foot adjustment [100mm]	✓	✓
Foldable	✓	✓
Transport Wheel	✓	✓
Assembly < 60sec	✓	✓
<b>Finishes</b>		
Anodised	✓	✓
Marine Spec	Optional	Optional

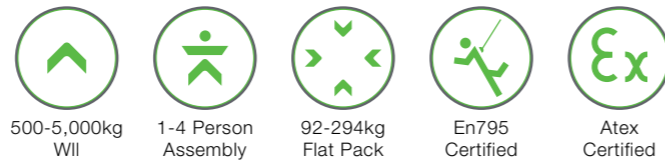
## REID PORTAGANTRY®

Our top quality and highly durable PORTAGANTRY is lightweight and extremely strong. This portable system can be manually assembled, using just four bolts and can safely lift up to 5,000kg, making it the ideal system for multiple applications.



### Key features

- EN795:2012 Certified
- ATEX Certified
- Can support goods and personnel lifting;
- Goods WLL of up to 5,000kg
- Personnel WLL of up to 2,500kg
- Suitable for up to 5 persons for fall protection applications
- Beams and A-Frames can be interchanged
- Ergonomic 360° swivel-locking castors, as standard
- Ease of assembly including height and span adjustment
- Anodised for increased corrosion resistance
- Engineered designs and bespoke sections reduce weight, providing lightweight portability



### Configurations

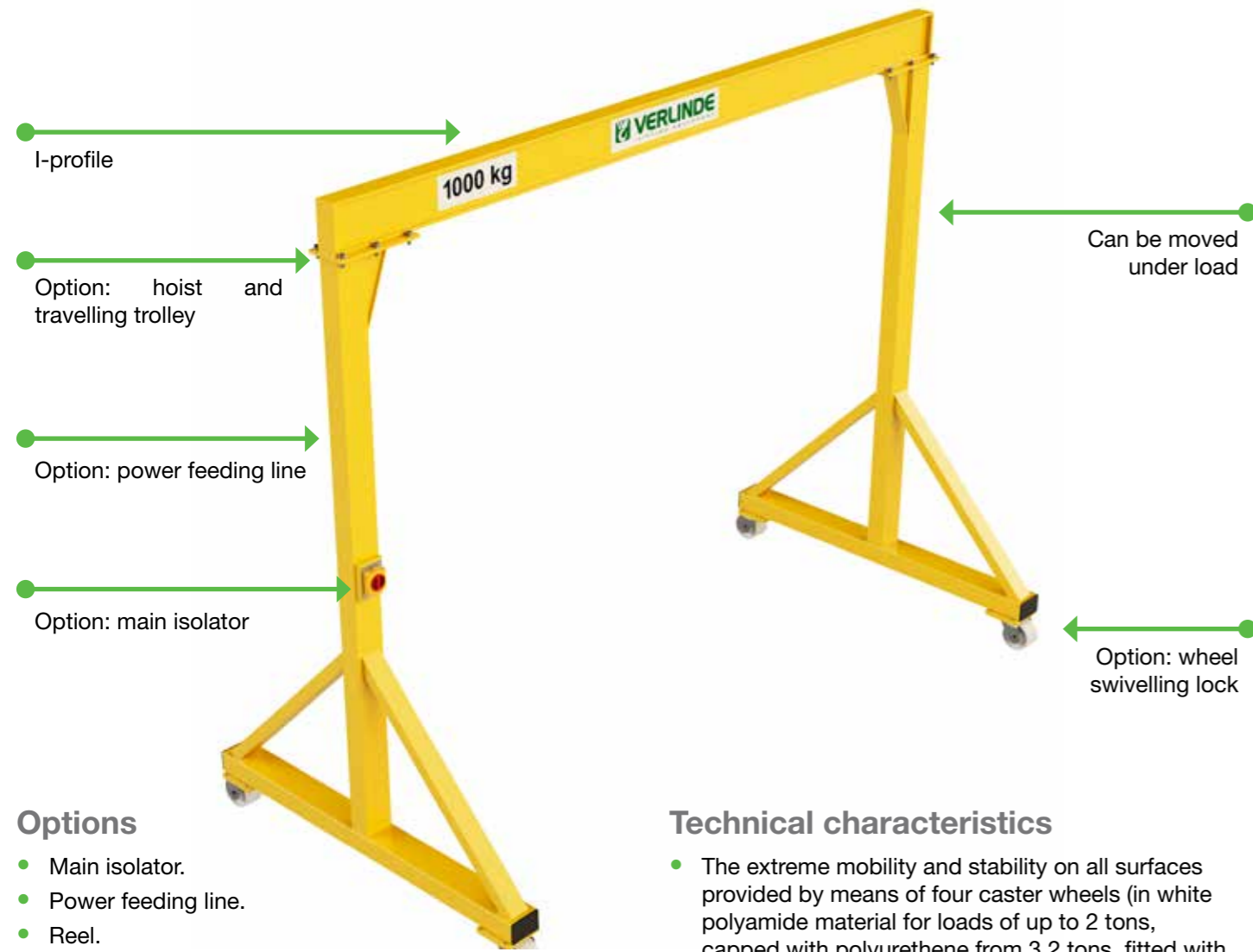
- The PORTAGANTRY is available in a range of configurations and can be customised in line with specific requirements (subject to WLL rating).
- The PORTAGANTRY has the ability to be moved under load. (Subject to detailed instruction and supervision by a competent person).

### Features & Performance

Accreditations, Certifications & Standards	500	1,000	2,000	3,000	5,000
EN795:2012	✓	✓	✓	✓	✓
PD CEN / TS16415:2013	✓	✓	✓	✓	✓
ANSI Z359.18-17	✓	✓	✓	✓	✓
AS/NZS 5532:2013	✓	✓	✓	✓	✓
ATEX Certified [Zone 2]	✓	✓	✓	✓	✓
ATEX Certified [Zone 1]	Optional	Optional	Optional	Optional	×
IRATA	✓	✓	✓	✓	✓
<b>Capacity</b>					
Maximum Goods Lifting [kg]	500	1,000	2,000	3,000	5,000
Maximum Personnel Lifting [kg]	250	500	1,000	1,500	2,500
Fall Arrest [Persons]	3	3	5	5	5
<b>Dimensions</b>					
Minimum Height of Lift [mm]	1,605	1,605	1,605	1,660	2,181
Maximum Height of Lift [mm]	5,829	5,829	5,829	5,527	5,000
Minimum Available Span [mm]	2,500	2,500	2,500	2,500	2,500
Maximum Available Span [mm]	9,000	9,000	8,400	8,400	5,500
<b>Trolley Options</b>					
Standard	✓	✓	✓	✓	✓
Gated	✓	✓	✓	✓	×
Close Coupled	✓	✓	✓	✓	×
Gear Driven	✓	✓	✓	×	×
Integrated Hoist	✓	✓	✓	×	×
<b>Standard Features</b>					
Ratchet Height Adjustment	✓	✓	✓	✓	✓
Mechanical aid Assembly	×	×	×	×	✓
<b>Optional Extras</b>					
Lobed Cheek Plates	✓	✓	✓	✓	✓
Winch Upgrade	✓	✓	✓	✓	✓
Wind Up Jack legs	✓	✓	✓	✓	✓
Trolley Rope Control System	✓	✓	✓	✓	✓
Festoon System	✓	✓	✓	✓	✓
Jointed Beam	✓	✓	×	×	×
<b>Finishes</b>					
Anodised	✓	✓	✓	✓	✓
316SS Fixings	Optional	Optional	Optional	Optional	Optional
Marine Spec	Optional	Optional	Optional	Optional	×



Workshop gantry for loads from 500kg to 5,000kg.



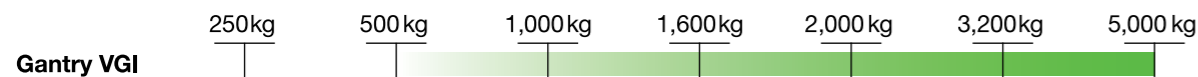
**Options**

- Main isolator.
- Power feeding line.
- Reel.
- Polyurethan wheel (per wheel).
- Rigging ring.
- Wheel block (per wheel).
- Polyurethan 4 layer painting RAL 1028 on epoxy primer.
- Polyurethan 4 layer painting special RAL on epoxy primer.
- Indoor paint other color than RAL 1028.
- Hot dip galvanizing.
- Covering for hoist.
- Cover for main isolator.

**Technical characteristics**

- The extreme mobility and stability on all surfaces provided by means of four caster wheels (in white polyamide material for loads of up to 2 tons, capped with polyurethane from 3.2 tons, fitted with ball bearing on the shafts and king pins. These wheels formed from acetyl resin have excellent shock behaviour and ability to withstand attack by chemicals.
- The raceway is a weld-fabricated IPE profile designed to accommodate a lifting and traversing movement device, with two traversing breast-pieces. The unit is finished in RAL 1028 polyurethane lacquer. Fully dismantlable, the VERLINDE independent gantries adapt to your need to make best use of workshop space.
- The gantry is delivered disassembled, together with its galvanised boltwork and takes only little time to assemble and commission.

**Load capacity**



**Options available on the gantries**

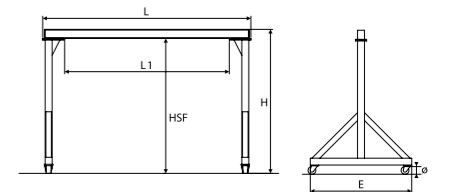
The VERLINDE range of standard gantries comes in three level of options for lifting and travelling of your loads:

- Level 1** Hand powered lifting and travelling motion
- Level 2** Electric powered lifting and powered travelling motion
- Level 3** Electric powered lifting and travelling motion

CHD Push trolley. Capacity from 250 to 10,000kg.

VHR Hand chain block. Capacity from 250 to 5,000kg.

EUROCHAIN VR Electric chain hoist. Capacity from 63 to 10,000kg.



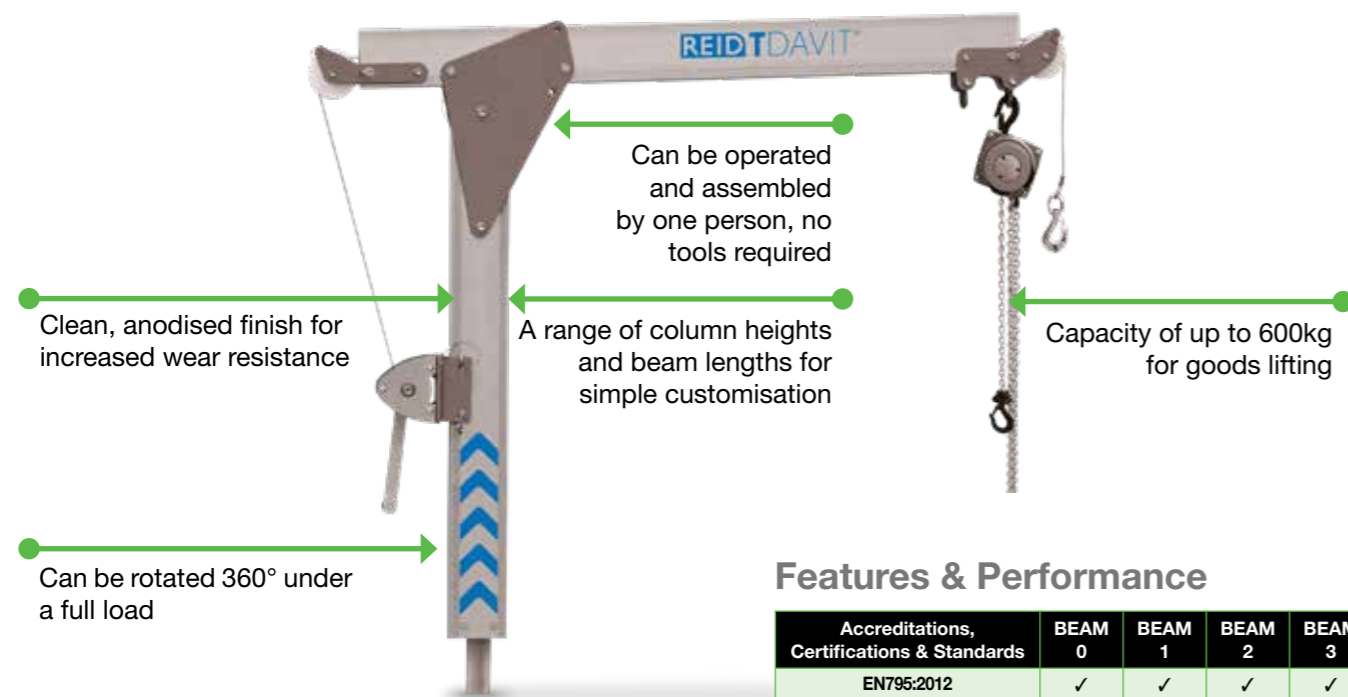
**Technical characteristics and dimensions**

Load (kg)	Span (mm)	HSF* (mm)	HSF min.(mm)	H (mm)	H min.(mm)	L (mm)	L1 (mm)	E (mm)	Ø (mm)	Weight (kg)
<b>Standard profile (VGIM)</b>										
1,000	3,000	3,000	-	3,250	-	3,220	2,420	2,720	200 - 160	-
1,600	3,000	3,000	-	3,270	-	3,220	2,420	2,720	200 - 160	-
2,000	3,000	3,000	-	3,330	-	3,250	2,250	2,720	200 - 154	-
3,000	3,000	3,000	-	3,430	-	3,300	2,300	2,790	250 - 200	-
5,000	3,000	3,000	-	3,430	-	3,350	4,450	2,875	300 - 250	-
6,000	3,000	3,000	-	3,430	-	3,350	1,950	2,875	300 - 250	-
<b>Standard profile (VGI)</b>										
500	2,500	3,000	-	3,180	-	2,690	2,090	1,500	150	210
	5,000	3,000	-	-	-	5,190	4,590	-	-	260
1,000	2,500	3,000	-	3,200	-	2,700	1,900	1,500	200	255
	5,000	3,000	-	-	-	5,200	4,400	-	-	335
1,600	2,500	3,000	-	3,200	-	2,720	1,720	2,000	200	365
	5,000	3,000	-	-	-	5,220	4,220	-	-	470
2,000	2,500	3,000	-	3,220	-	2,750	1,750	2,000	200	450
	5,000	3,000	-	-	-	5,250	4,250	-	-	575
3,200	2,500	3,000	-	3,300	-	2,780	1,780	2,000	250	590
	5,000	3,000	-	-	-	5,280	4,280	-	-	700
5,000	2,500	3,000	-	3,360	-	2,800	1,800	2,000	300	705
	5,000	3,000	-	-	-	5,300	4,300	-	-	860
<b>Hollow profile EUROSYSTEM ST (VGPS)</b>										
500	2,000	2,000	-	2,220	-	2,100	1,390	1,200	150	180
	5,000	2,000	-	2,220	-	5,100	4,390	1,200	150	237
1,000	2,000	2,000	-	2,220	-	2,100	1,390	1,200	150	199
	5,000	2,000	-	2,285	-	5,100	4,390	1,200	150	306
1,600	2,000	2,000	-	2,220	-	2,100	1,140	1,200	200	220
	5,000	2,000	-	2,220	-	5,100	4,140	1,200	200	327
2,000	2,000	2,000	-	2,285	-	2,100	1,140	1,200	200	271
	4,000	2,000	-	2,285	-	4,100	3,140	1,200	200	329
<b>Hollow aluminium profile EUROSYSTEM ALU (VGPA)**</b>										
250	2,000	3,200	2,150	3,335	2,235	-	900	1,520	150	98
	6,000	3,200	2,150	3,335	2,285	-	4,900	1,520	150	110
500	2,000	3,200	2,150	3,335	2,285	-	900	1,520	150	93
	6,000	3,200	2,150	3,415	2,365	-	4,900	1,520	150	144
1,000	2,000	3,200	2,150	3,415	2,365	-	900	1,520	150	106
	5,000	3,200	2,150	3,450	2,400	-	4,900	1,520	150	172
1,600	2,000	3,200	2,150	3,415	2,365	-	900	1,520	200	151
	5,000	3,200	2,150	3,450	2,400	-	3,900	1,520	200	203
2,000	2,000	3,200	2,150	3,415	2,365	-	900	1,520	200	146
	4,000	3,200	2,150	3,450	2,400	-	2,900	1,520	200	183

\*Other heights are available for hook clearances of 2 to 4.5 metres. \*\*Dimensions given for model H1.

## REID TDAVIT®

Our TDAVIT is lightweight, portable, and as well as a wide range of standard sizes can be custom-designed and manufactured to specifically meet our customers' individual needs. Truly pioneering, it offers a lifting capacity of up to 600kg and 360° rotation under a full load.



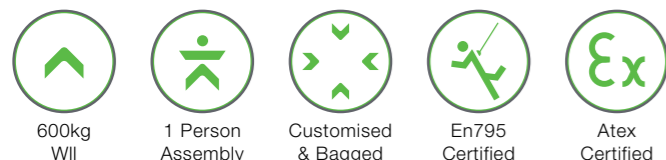
### Key features

- EN795:2012 Certified
- ATEX Certified
- Can support goods and personnel lifting;
  - Goods WLL of up to 600kg
  - Personnel WLL of up to 300kg
- Can be operated and assembled by one person, no tools required
- Can be rotated 360° under a full load
- Designed with a universal kingpin which is compatible for all REID sockets
- Clean, anodised finish for increased corrosion resistance
- A variety of attachments for a range of applications
- Engineered designs and bespoke sections reduce weight, providing lightweight portability

### Configurations

The TDAVIT is available in a range of configurations and can be customised in line with specific requirements (subject to WLL rating).

\*\*Refer to REID for further guidance



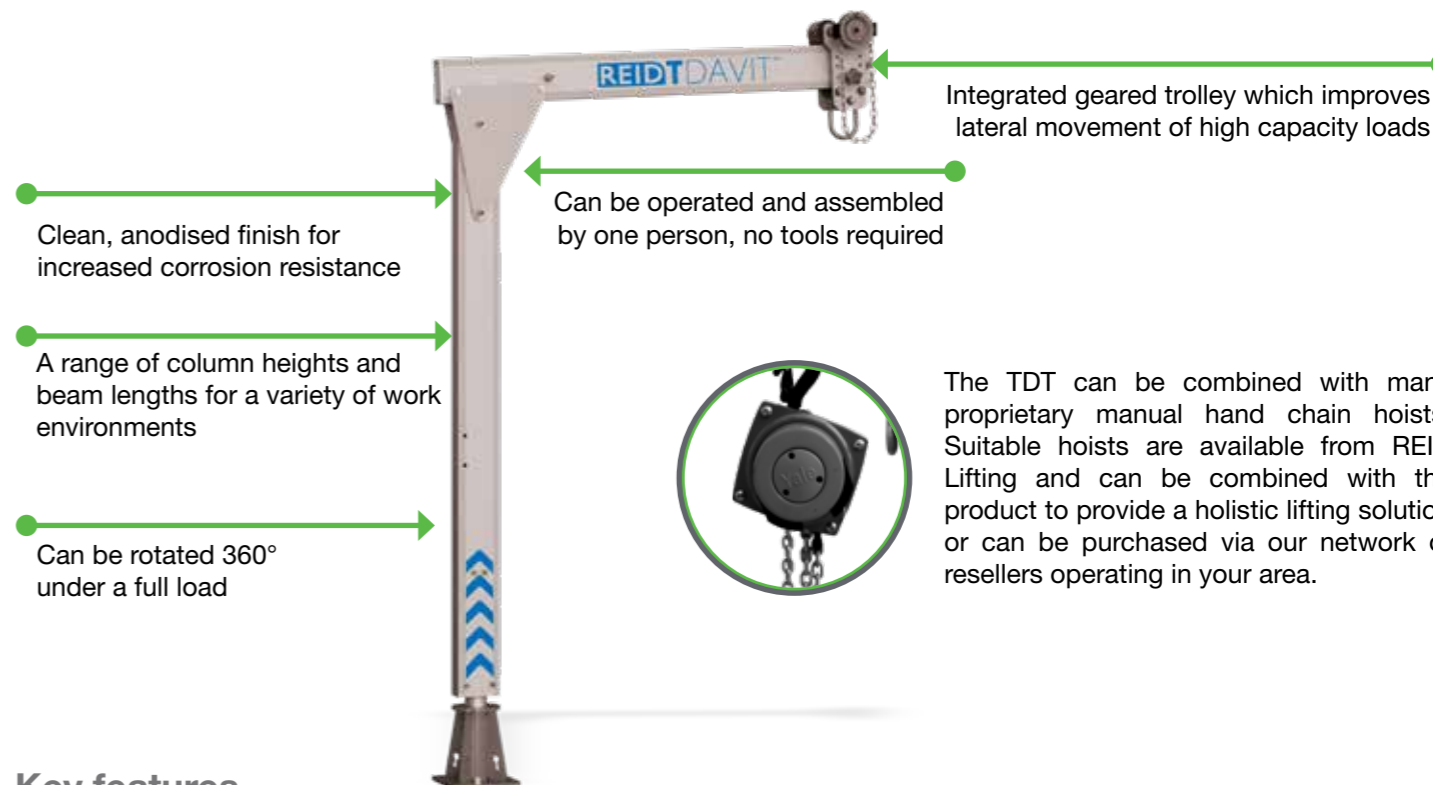
### Features & Performance

Accreditations, Certifications & Standards	BEAM 0	BEAM 1	BEAM 2	BEAM 3	BEAM 4
EN795:2012	✓	✓	✓	✓	×
AS/NZS 5532:2013	✓	✓	✓	✓	×
ATEX Certified [Zone 2]	✓	✓	✓	✓	✓
ATEX Certified [Zone 1]	Optional	Optional	Optional	Optional	Optional
IRATA	✓	✓	✓	✓	×
<b>Capacity</b>					
Maximum Goods Lifting [kg]	600	500	500	375	300
Maximum Personnel Lifting [kg]	300	250	250	150	×
Fall Arrest [Persons]	1	1	1	1	×
<b>Dimensions</b>					
Maximum Reach [mm]	800	1,000	1,200	1,600	2,000
Maximum Height of Lift [mm]	2,165	2,240	2,315	2,460	2,615
<b>Socket Diameter</b>					
65mm	✓	✓	✓	✓	✓
<b>Socket Options</b>					
Top Mount	✓	✓	✓	✓	✓
Flush Mount	✓	✓	✓	✓	✓
Side Mount	✓	✓	✓	✓	✓
Bridge Mount	✓	✓	✓	✓	✓
Pedestal	✓	✓	✓	✓	✓
Extension Post	✓	✓	✓	✓	✓
<b>Standard Features</b>					
Shackle Lifting points	✓	✓	✓	✓	✓
Component Weight < 25kg	✓	✓	✓	✓	✓
<b>Optional Extras</b>					
Winch Capable	✓	✓	✓	✓	✓
Rotational Handle	✓	✓	✓	✓	✓
<b>Finishes</b>					
Anodised	✓	✓	✓	✓	✓
316SS Fixings	Optional	Optional	Optional	Optional	Optional
Marine Spec	Optional	Optional	Optional	Optional	Optional

Dimensions in the table are approximate values. For more accurate details please refer to the Dimension Table. All line items marked with a '✓' come as standard. All line items marked with a 'x' are not available. All line items marked with 'optional' are available as an option and may incur additional costs.

## REID TDAVIT® TDT

Our TDAVIT – TDT is lightweight, portable and has been designed to meet customer needs where the lifting and moving of equipment in tight spaces is a challenge.



### Key features

- A range of 3 column and 4 beam sizes to suit customer specific needs
- Variable beam traversing via integrated geared trolley and customers choice of hoist
- Trolley can be secured during lift
- Trolley can be traversed whilst under load (34¼" to 45¾" of movement)
- Rotation under load due to patented integral bearing system
- Universal kingpin fits all REID sockets
- Manufactured from marine grade alloy and anodized/powder coated for increased corrosion resistance
- Quality engineering and production parts reduce weight and provide high strength to weight ratios
- Two piece design to reduce manual handling concerns during transportation and assembly
- ATEX Zone 2 (explosive atmospheres) certification as standard
- ATEX Zone 1 (explosive atmospheres) as optional upgrade
- Can be assembled and operated by one person. No tools required

### Configurations

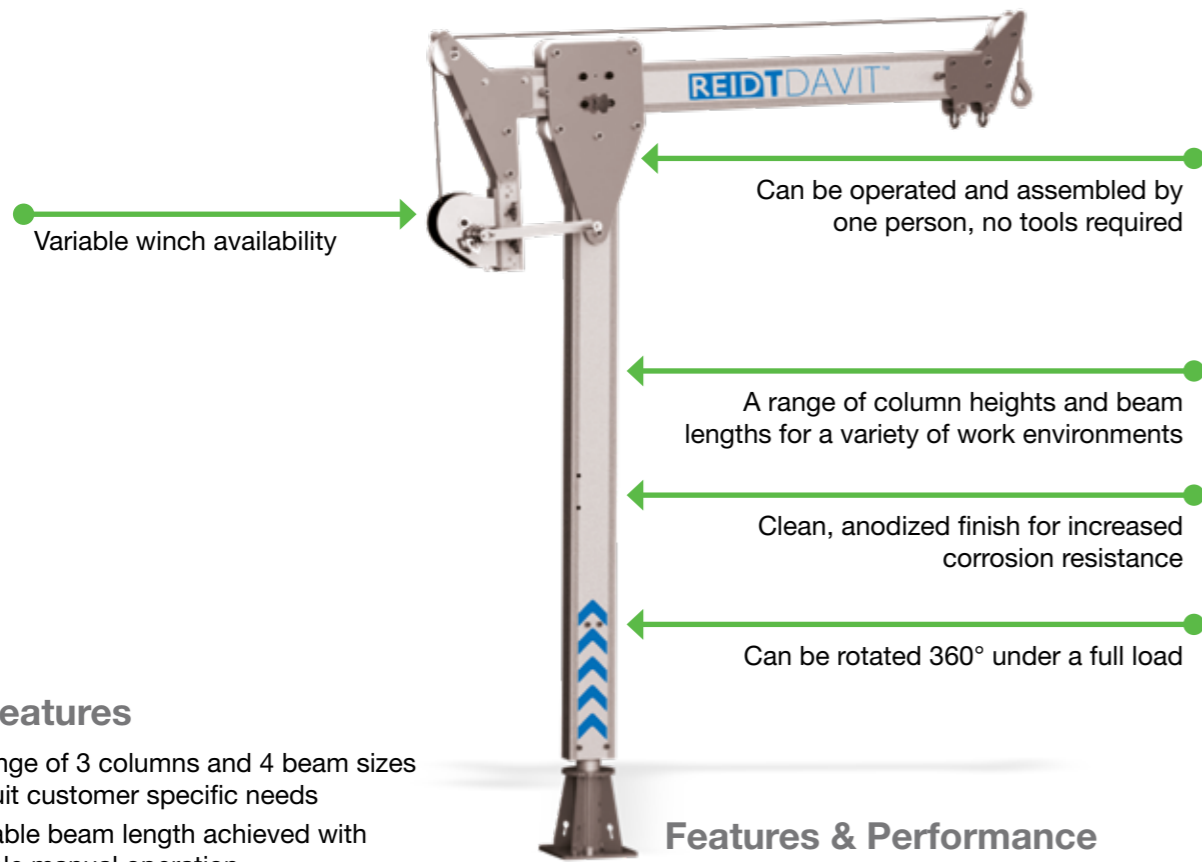
The TDT is available in several standard configurations to meet with customers most common requirements. Custom solutions can be offered by request, subject to the working load limit requirements.

### Features & Performance

Accreditations, Certifications & Standards	BEAM 0	BEAM 1	BEAM 2	BEAM 4
Directive 2006/42/EC	✓	✓	✓	✓
ATEX Certified [Zone 1]	Optional	Optional	Optional	Optional
<b>Capacity</b>				
Maximum Goods Lifting [kg]	400	200	150	150
<b>Dimensions</b>				
Maximum Reach [mm]	1,200	1,500	1,700	2,000
Maximum Height of Lift [mm]	1,945	1,960	1,971	1,986
<b>Socket Diameter</b>				
65mm	✓	✓	✓	✓
<b>Socket Options</b>				
Top Mount	✓	✓	✓	✓
Flush Mount	✓	✓	✓	✓
Side Mount	✓	✓	✓	✓
Bridge Mount	✓	✓	✓	✓
Pedestal	✓	✓	✓	✓
Extension Post	✓	✓	✓	✓
<b>Standard Features</b>				
Component Weight < 25kg	✓	✓	✓	✓
Geared Trolley	✓	✓	✓	✓
<b>Optional Extras</b>				
Winch Capable	✓	✓	✓	✓
Rotational Handle	✓	✓	✓	✓
<b>Finishes</b>				
Anodised	✓	✓	✓	✓
316SS Fixings	Optional	Optional	Optional	Optional
Marine Spec	Optional	Optional	Optional	Optional

## REID TDAVIT® TDVW

Our TDAVIT – TDVW is lightweight, portable and has been designed to meet customer needs where the lifting and moving of equipment in tight spaces is a challenge.



### Key features

- A range of 3 columns and 4 beam sizes to suit customer specific needs
- Variable beam length achieved with simple manual operation
- Beam can be secured during lift
- Easy beam adjustment whilst under load (726mm to 1526mm of movement)
- Rotation under load due to patented integral bearing system
- Universal kingpin fits all REID sockets
- Manufactured from marine grade alloy and anodised/ powder coated for increased corrosion resistance
- Quality engineering and production parts reduce weight and provide high strength to weight ratios
- Two piece design to reduce manual handling concerns during transportation and assembly
- ATEX Zone 2 (explosive atmospheres) certification as standard
- ATEX Zone 1 (explosive atmospheres) as optional upgrade
- Can be assembled and operated by one person. No tools required

### Features & Performance

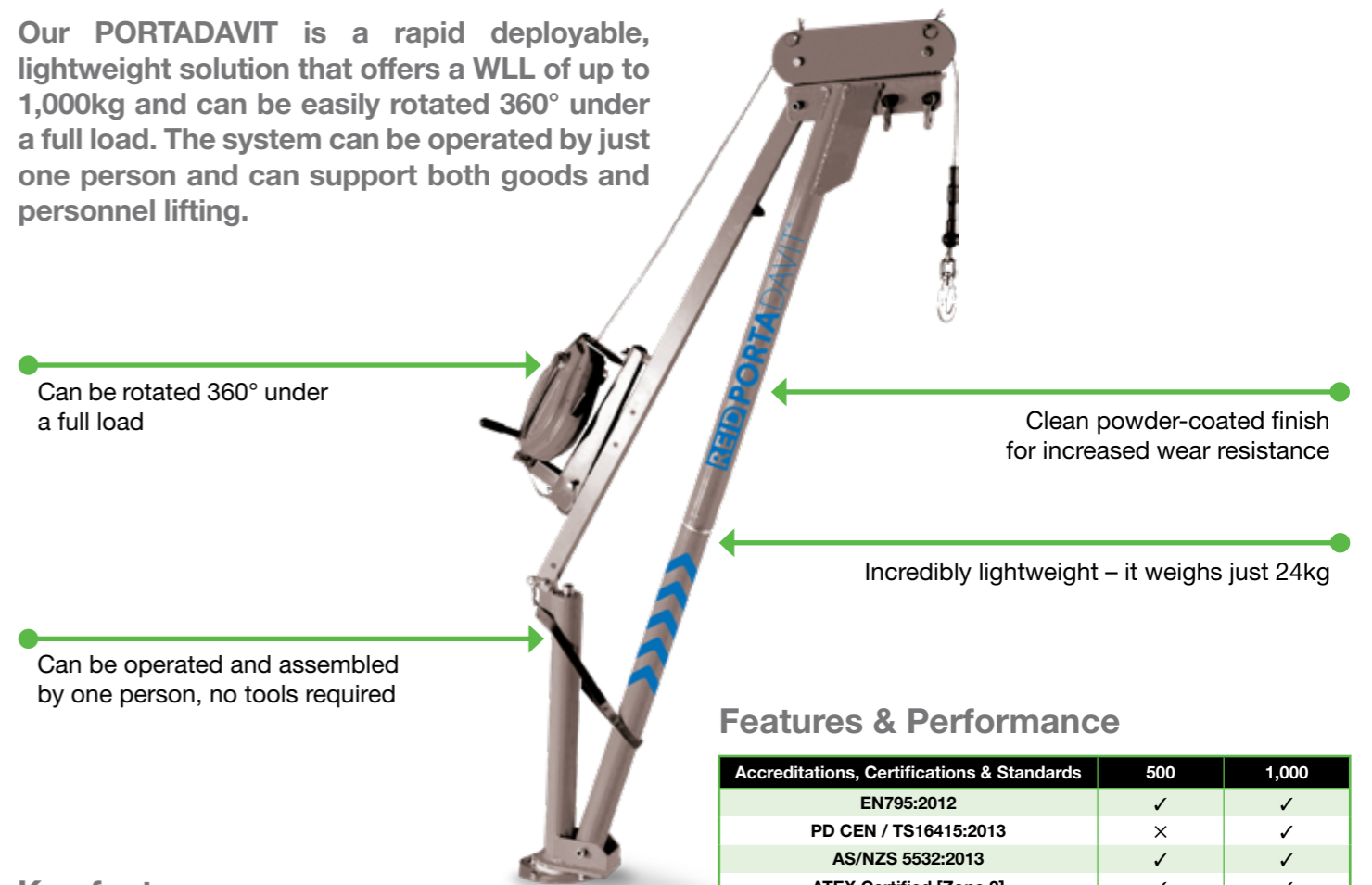
Accreditations, Certifications & Standards	1,200	1,500	1,700	2,000
Directive 2006/42/EC	✓	✓	✓	✓
ATEX Certified [Zone 1]	Optional	Optional	Optional	Optional
<b>Capacity</b>				
Maximum Goods Lifting [kg]	300	150	200	200
<b>Dimensions</b>				
Maximum Reach [mm]	1,200	1,500	1,700	2,000
Maximum Height of Lift [mm]	2,093	2,107	2,118	2,132
<b>Socket Diameter</b>				
65mm	✓	✓	✓	✓
<b>Socket Options</b>				
Top Mount	✓	✓	✓	✓
Flush Mount	✓	✓	✓	✓
Side Mount	✓	✓	✓	✓
Bridge Mount	✓	✓	✓	✓
Pedestal	✓	✓	✓	✓
Extension Post	✓	✓	✓	✓
<b>Standard Features</b>				
Shackle Lifting Points	✓	✓	✓	✓
<b>Finishes</b>				
Anodised	✓	✓	✓	✓
316SS Fixings	Optional	Optional	Optional	Optional
Marine Spec	Optional	Optional	Optional	Optional

### Configurations

The TDVW is available in several standard configurations to meet with customers most common requirements. Custom solutions can be offered by request, subject to the working load limit requirements.

## REID PORTADAVIT®

Our PORTADAVIT is a rapid deployable, lightweight solution that offers a WLL of up to 1,000kg and can be easily rotated 360° under a full load. The system can be operated by just one person and can support both goods and personnel lifting.



### Key features

- EN795:2012 Certified
- ATEX Certified
- Can support goods and personnel lifting;
- Goods WLL of up to 1,000kg
- Personnel WLL of up to 300kg
- Ease of assembly with the use of just one pin, no tools required
- Can be rotated 360° under a full load
- Engineered with easy radius adjustment
- Engineered designs and bespoke sections reduce weight, providing lightweight portability

### Configurations

The PORTADAVIT is available in a range of standard configurations. It can also be customised in line with specific requirements and interchangeable components (subject to WLL rating)

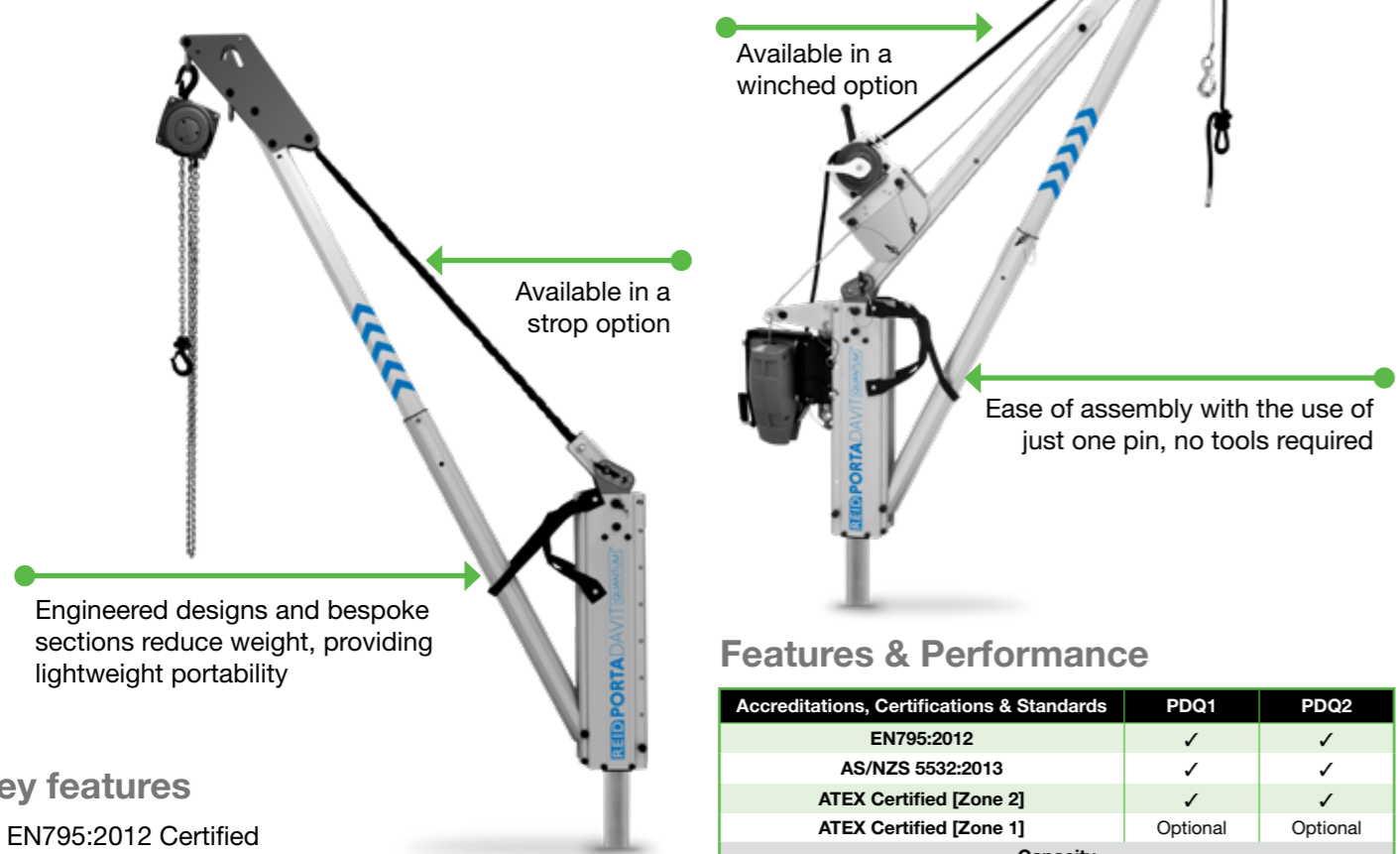


### Features & Performance

Accreditations, Certifications & Standards	500	1,000
EN795:2012	✓	✓
PD CEN / TS16415:2013	×	✓
AS/NZS 5532:2013	✓	✓
ATEX Certified [Zone 2]	✓	✓
ATEX Certified [Zone 1]	Optional	Optional
IRATA	×	×
<b>Capacity</b>		
Maximum Goods Lifting [kg]	500	1,000
Maximum Personnel Lifting [kg]	250	300
Fall Arrest [Persons]	1	2
<b>Dimensions</b>		
Maximum Reach [mm]	1,200	1,200
Maximum Height of Lift [mm]	2,107	2,100
<b>Socket Diameter</b>		
65mm	✓	×
95mm	×	✓
<b>Socket Options</b>		
Top Mount	✓	✓
Flush Mount	✓	✓
Side Mount	✓	✓
Bridge Mount	✓	×
Pedestal	✓	×
Extension Post	✓	×
<b>Standard Features</b>		
Shackle Lifting points	✓	✓
Weight < 25kg	✓	×
<b>Optional Extras</b>		
Winch Capable	Optional	×
<b>Finishes</b>		
Anodised	×	✓
Powder Coated	✓	×
316SS Fixings	Optional	Optional
Marine Spec	Optional	Optional

## REID PORTADAVIT® QUANTUM

Our PORTADAVIT QUANTUM is a rapidly deployable, lightweight solution to heavy lifting and lowering of goods and personnel. Weighing from just 18.5kg when fully assembled, it can be manually operated by one person while maintaining a lifting capacity of up to 600kg.

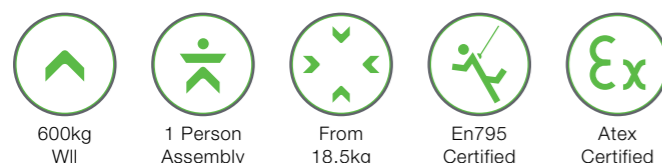


### Key features

- EN795:2012 Certified
- ATEX Certified
- Can support goods and personnel lifting;
- Goods WLL of up to 600kg
- Personnel WLL of up to 300kg
- Ease of assembly with the use of just one pin, no tools required
- Can be rotated 360° under a full load
- Designed with a universal kingpin which is compatible for all REID sockets
- Easy radius adjustment
- Engineered designs and bespoke sections reduce weight, providing lightweight portability

### Configurations

The PORTADAVIT QUANTUM is available in a strop and winched version for use with a range of lifting equipment.



### Features & Performance

Accreditations, Certifications & Standards	PDQ1	PDQ2
EN795:2012	✓	✓
AS/NZS 5532:2013	✓	✓
ATEX Certified [Zone 2]	✓	✓
ATEX Certified [Zone 1]	Optional	Optional
<b>Capacity</b>		
Maximum Goods Lifting [kg]	600	500
Maximum Personnel Lifting [kg]	300	250
Fall Arrest [Persons]	1	1
<b>Dimensions</b>		
Maximum Reach [mm]	1,200	1,500
Maximum Height of Lift [mm]	2,111	1,957
<b>Socket Diameter</b>		
65mm	✓	✓
<b>Socket Options</b>		
Top Mount	✓	✓
Flush Mount	✓	✓
Side Mount	✓	✓
Bridge Mount	✓	✓
Pedestal	✓	✓
Extension Post	✓	✓
<b>Standard Features</b>		
One Piece Unit	✓	✓
Multiple Accessory Attachment	✓	✓
Shackle Lifting points	✓	✓
Weight < 25kg	✓	✓
<b>Optional Extras</b>		
Winch Capable	✓	✓
Rotational Handle	✓	✓
<b>Finishes</b>		
Anodised	✓	✓
316SS Fixings	Optional	Optional
Marine Spec	Optional	Optional

## REID Bases & Sockets

We offer a wide range of portable bases, sockets and extensions which offer full versatility and compatibility with our Davit range, all of which are designed to make light work of lifting and lowering.

### Pedestals

Our pedestal sockets are similar to top mount sockets and are manufactured from lightweight aluminium. Our pedestals are designed to provide additional lift height or reach over obstacles, protective rails or walls.

We offer pedestals which are suitable for use with our 65mm kingpin davit range.

**Our pedestals are available in three standard sizes:**

- 500mm
- 800mm
- 1,100mm

They can also be customised to meet our customers' specific requirements.

### Socket Extensions

Our socket extensions are designed to provide additional lift height or reach over obstacles, protective rails or walls for 65mm socket/kingpin davits. Made from lightweight aluminium alloy, with handles for lifting and carrying, they're designed to be easy to use. Simply insert them into the existing socket and assemble a standard davit, as normal, using the extension as its socket.

**Our socket extensions are available in three standard sizes:**

- 500mm
- 800mm
- 1,100mm

They can also be customised to meet our customers' specific requirements.

\*When fixing sockets to structures, customers must always seek the guidance of a suitably qualified engineer to ensure that the structure is able to support the required loads.  
\*\* Socket extensions are only suitable to be used with our socket range and cannot be used with a pedestal.



**Disclaimer:** All REID sockets & extensions have been designed, developed and tested for safe use with REID's equipment and form a key part of the integrity of the total system. Should non-standard third party sockets be used, REID Lifting's Declaration of Conformity & Incorporation on the products is negated. i.e. The system becomes the responsibility of the client.



### Top Mount Socket



- Suitable for use with our full davit range
- EN795:2012 certified and meets requirements of IRATA ICOP
- Galvanised Steel Top Mount[STMG0500V2] meets requirements of BS8610:2017
- Secured using 4nr. M16 anchors [not supplied]
- Suitable for bolting into existing concrete, steel structures or through fixing in other substrates
- Comes complete with cover

Product Code	Description	Material	Weight [kg]	Diameter [mm]
STMG0500V2	Socket Top Mount 65 GMS	Galvanised Steel	13	65
STMS0500V2	Socket Top Mount 65 316SS	Stainless Steel	17	65
STMA0500	Socket Top Mount 65	Aluminium Anodised Aluminium	9	65
STMG1000	Socket Top Mount 95 GMS	Galvanised Steel	29	95
STMS1000	Socket Top Mount 95 316SS	Stainless Steel	30	95

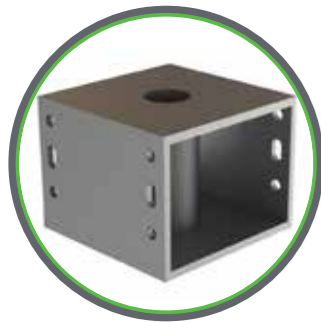
### Side Mount Socket



- Suitable for use with our full davit range
- EN795:2012 certified and meets requirements of IRATA ICOP
- Galvanised Steel Side Mount[SSMG0500V2] meets requirements of BS8610:2017
- Secured using 4nr. M16 anchors [not supplied]
- Suitable for mounting on the side of concrete or steel structures
- A brace plate can be supplied for thin-walled concrete

Product Code	Description	Material	Weight [kg]	Diameter [mm]
SSMG0500V2	Socket Side Mount 65 GMS	Galvanised Steel	13	65
SSMS0500V2	Socket Side Mount 65 316SS	Stainless Steel	17	65
SSMA0500	Socket Side Mount 65	Aluminium Anodised Aluminium	6	65
SSMG1000	Socket Side Mount 95 GMS	Galvanised Steel	30	95
SSMS1000	Socket Side Mount 95 316SS	Stainless Steel	29	95

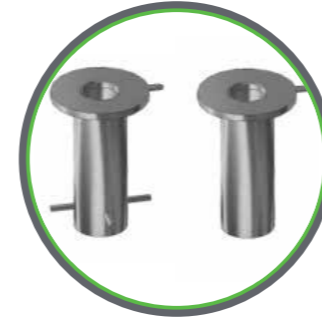
### Bridge Mount Socket



- Suitable for use with 65mm REID davits
- EN795:2012 certified and meets requirements of IRATA ICOP
- Secured using 4nr. M16 anchors [not supplied]
- Suitable for bolting into steel structures
- Designed to fit open mesh grating or flush with structural steel work

Product Code	Description	Material	Weight [kg]	Diameter [mm]
SBMG0500	Socket Bridge Mount 65 GMS	Galvanised Steel	19	65
SBMS0500	Socket Bridge Mount 65 316SS	Stainless Steel	19	65
SBMA0500	Socket Bridge Mount 65	Aluminium Anodised Aluminium	7	65

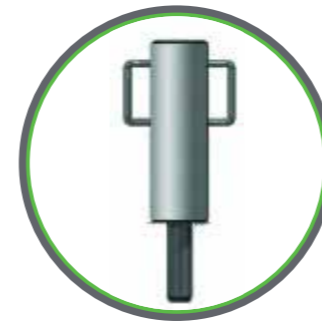
### Flush Mount Socket



- Suitable for use with our full davit range
- EN795:2012 certified and meets requirements of IRATA ICOP
- Suitable for resin fixing into existing concrete
- Complete with cover and re-bars, for casting into concrete

Product Code	Description	Material	Weight [kg]	Diameter [mm]
SFMG0500	Socket Flush Mount 65 GMS	Galvanised Steel	5	65
SFMS0500	Socket Flush Mount 65 316SS	Stainless Steel	4	65
SFRG0500	Socket Flush Mount Resin Bond 65 GMS	Galvanised Steel	5	65
SFRS0500	Socket Flush Mount Resin Bond 65 316SS	Stainless Steel	4	65
SFMG1000	Socket Flush Mount 95 GMS	Galvanised Steel	9.5	95
SFMS1000	Socket Flush Mount 95 316SS	Stainless Steel	9.5	95
SFRG1000	Socket Flush Mount 95 Resin Bond GMS	Galvanised Steel	9.5	95
SFRS1000	Socket Flush Mount 95 Resin Bond 316SS	Stainless Steel	9.5	95

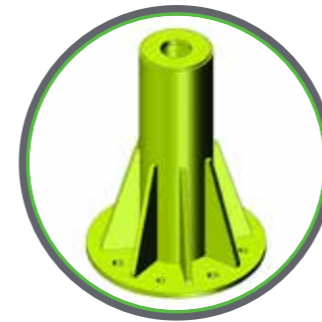
### Socket Extensions



- Can be used with 65mm REID davits combined with 65mm fixed sockets
- EN795:2012 certified up to 1,600mm radius
- Integrated carry handles
- Safe use features
- Maintenance free
- Manual handling compliant

Product Code	Description	Material	Weight [kg]	Diameter [mm]
SE0500-0500	Socket Extension 500	Aluminium	12	500
SE0500-0800	Socket Extension 800	Aluminium	15	800
SE0500-1100	Socket Extension 1100	Aluminium	17	1,100

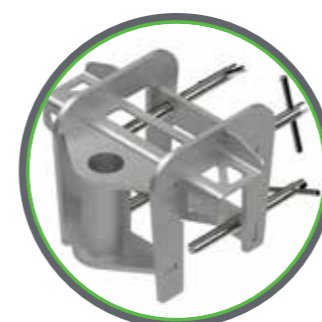
### Socket Pedestals



- Suitable for use with 65mm REID davits
- EN795:2012 Certified up to 1,600mm radius
- Secured using 4nr. M16 or M20 anchors [not supplied]
- Meets requirements of IRATA ICOP up to 1200mm radius
- Safe use features
- Maintenance free
- Manual handling compliant

Product Code	Description	Material	Weight [kg]	Diameter [mm]
SP0500-0500	Socket Pedestal 65 500mm	Aluminium	17	500
SP0500-0800	Socket Pedestal 65 800mm	Aluminium	19	800
SP0500-1100	Socket Pedestal 65 1100mm	Aluminium	19	1,100

### PORTABASE Trench Mount Socket



- EN795:2012 Type B certified
- Suitable for use with Davits up to a radius of 1,200mm
- Fall arrest capacity – 1 user
- Personnel capacity up to 250kg\*
- Goods capacity up to 500kg\*
- Galvanised steel construction and powder coated finish
- Designed for use in trenching and shoring applications subject to structural validation

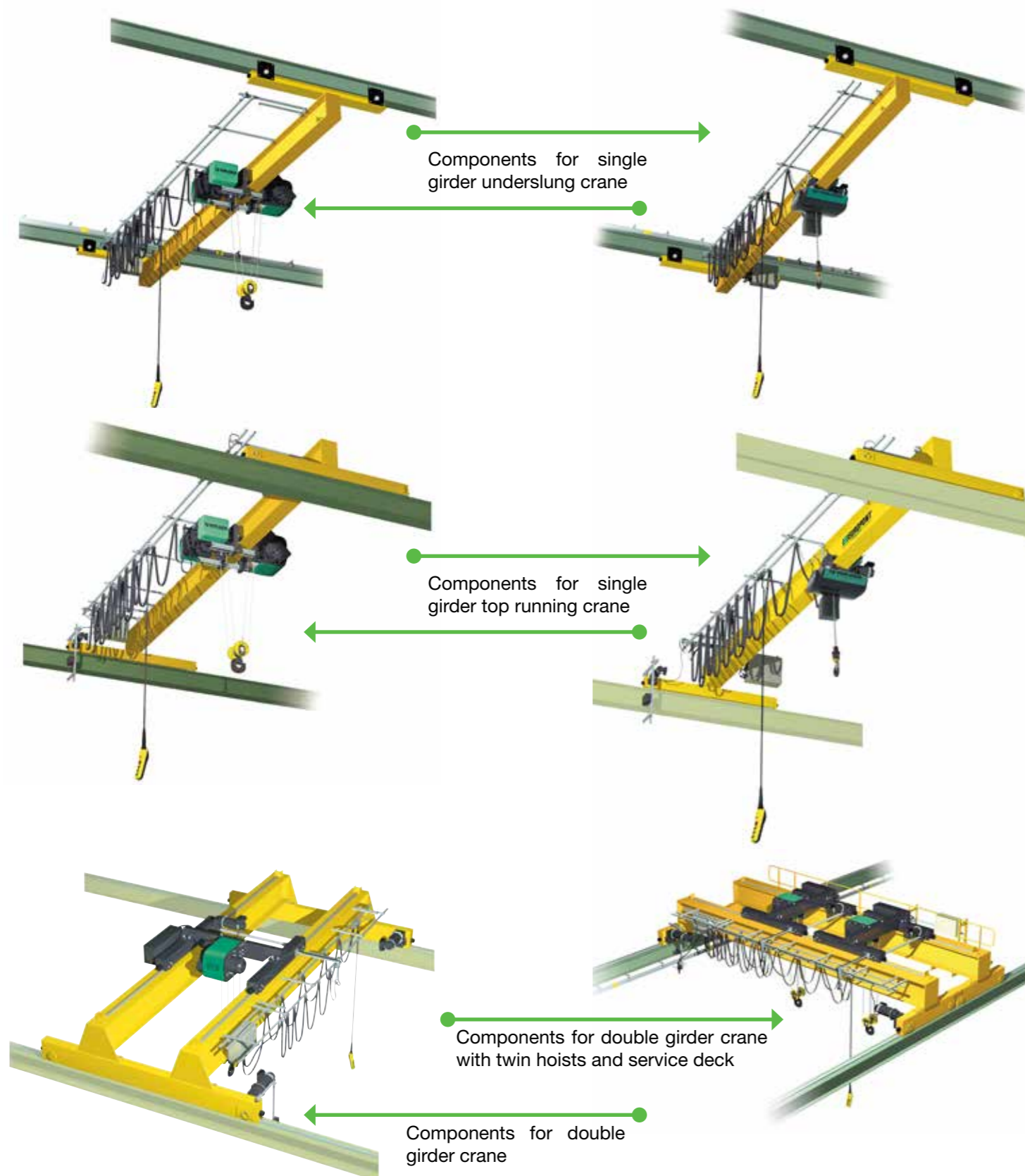
Product Code	Description	Material	Weight [kg]	Diameter [mm]
PBTM00001	Porta Base Trench Mount - Max 1200mm Radius	Galvanised Steel	25	65

\* For detailed product drawings see our socket product overview.

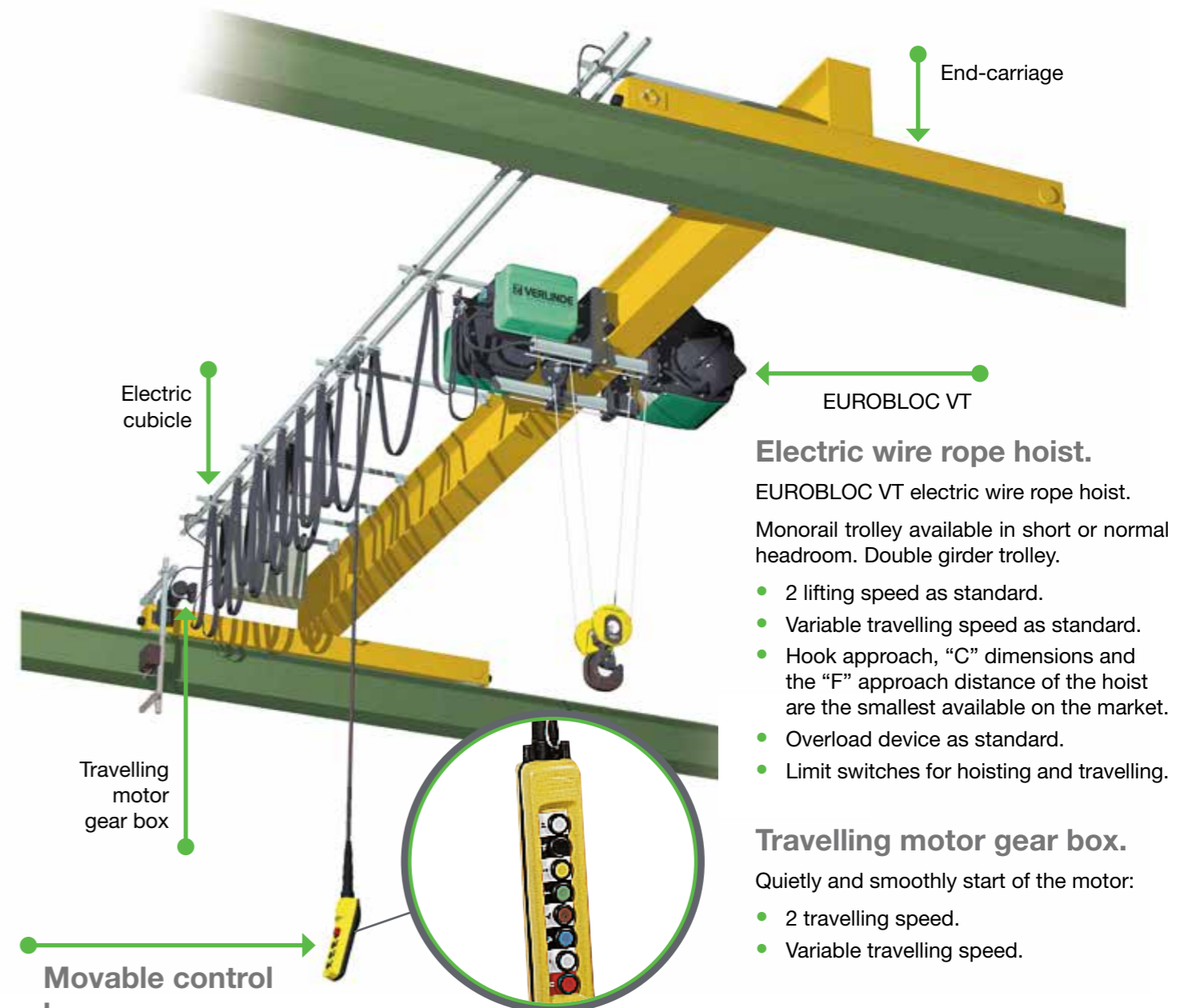


**Composant+®**

Complete range of components for standard cranes for load from 125 to 250,000kg.



Components for single girder top running crane with power feeding line along the girder.



### Electric wire rope hoist.

EUROBLOC VT electric wire rope hoist.

Monorail trolley available in short or normal headroom. Double girder trolley.

- 2 lifting speed as standard.
- Variable travelling speed as standard.
- Hook approach, "C" dimensions and the "F" approach distance of the hoist are the smallest available on the market.
- Overload device as standard.
- Limit switches for hoisting and travelling.

### Travelling motor gear box.

Quietly and smoothly start of the motor:

- 2 travelling speed.
- Variable travelling speed.

### Top running end-carriages.

- Direct drive wheels.
- Rubber buffer.
- The end-carriages are fastened with a plate bolted onto the girder.

### Electric cubicle.

- The steel control panel is sealed (IP 55).
- Both the main switch, which is lockable and controlled from the outside, and the circuit ON/OFF switch.
- Comply with all international standard.

### Movable control box.

- Moves along the crane and is independent from the hoist. The mobile pendant ensures a high level of safety for the operator.
- The pendant comes with the plug.

**VERLINDE Compositant+®**  
LIFTING EQUIPMENT

Components for single girder top running crane with cable chain power feeding line.

**Travelling motor gear box.**

Quietly and smoothly start of the motor:

- 2 travelling speed.
- Variable travelling speed.

**Top running end-carriages.**

- Direct drive wheels.
- Rubber buffer.
- The end-carriages are fastened with a plate bolted onto the girder.

**Electric cubicle.**

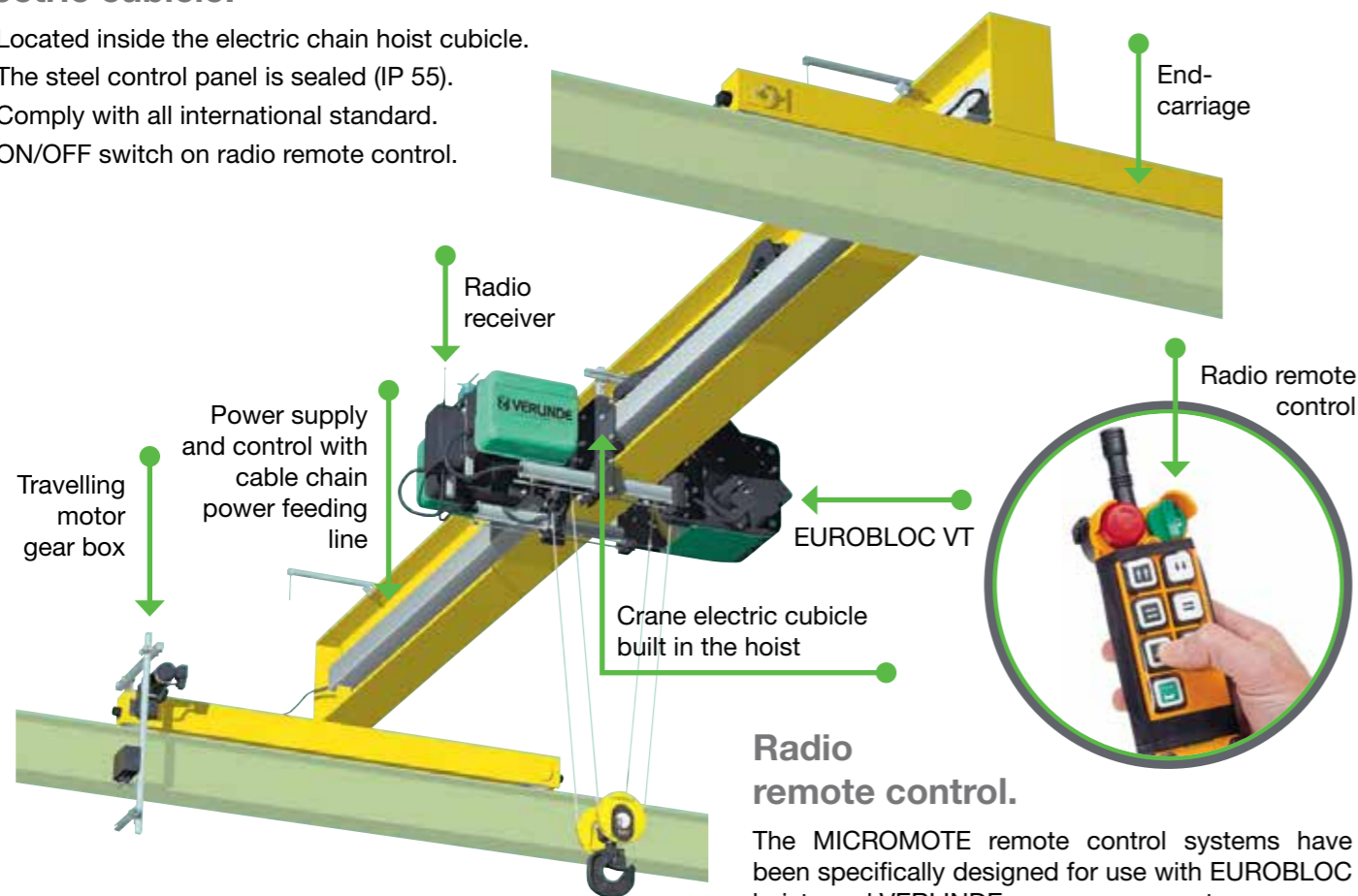
- Located inside the electric chain hoist cubicle.
- The steel control panel is sealed (IP 55).
- Comply with all international standard.
- ON/OFF switch on radio remote control.

**Electric wire rope hoist.**

EUROBLOC VT electric wire rope hoist.

Monorail trolley available in short or normal headroom.  
Double girder trolley.

- 2 lifting speed as standard.
- Variable travelling speed as standard.
- Hook approach, "C" dimensions and the "F" approach distance of the hoist are the smallest available on the market.
- Overload device as standard.
- Limit switches for hoisting and travelling.



**Radio remote control.**

The MICROMOTE remote control systems have been specifically designed for use with EUROBLOC hoists and VERLINDE crane components.

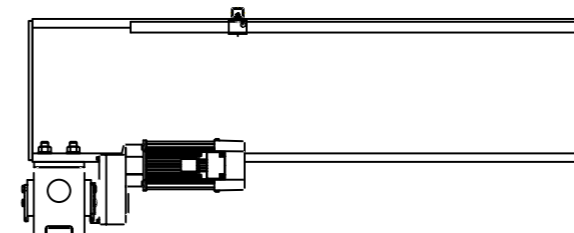
Designed for the most demanding industrial environments, MICROMOTE remote control systems are easy to use, flexible and reliable.

MICROMOTE means improved operator productivity and safety during hoisting operations and savings made through increased productivity and a reduction in idle time.

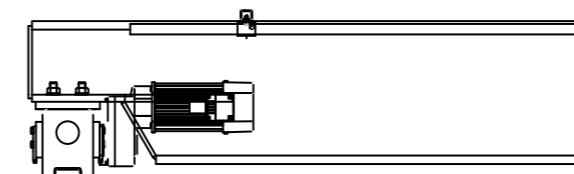
Delivery as standard with horn on push button box.

**Options**

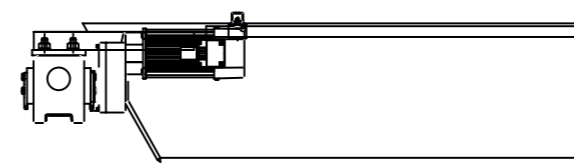
- MT 2 (Electronic control and recording status of the hoist and crane: SWP, time running, starts, overloads, temperature, load, brake, etc.).
- Display with load indication on hoist, hook, control box or crane.
- Twin hoists.



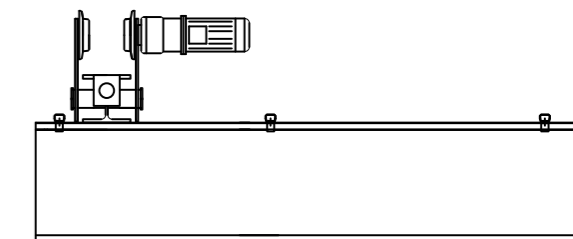
Top running single and double girder "Top Connection"



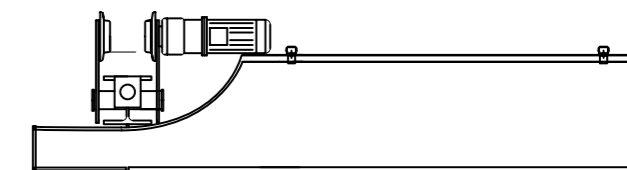
Top running single and double girder "Medium Connection"



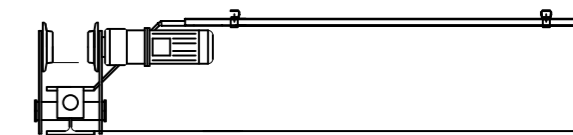
Top running single and double girder "Low Connection"



Underslung single girder "Top Connection"



Underslung single girder "Medium Connection"



Underslung single girder "Low Connection"

**Standards and hoisting regulations**

**CE directive.** Since 129 December 2009, the European Machinery Directive (2006/42/EC) applies to the sale and assembly of all new machines marketed from 2010. The new decree is complementary to the former Directive, made up of 600 standards issued in 1995. That directive obliges that machine constructors ensure that their machinery complies with certain regulations, standards, national legislations and technical specifications.

**F.E.M.** European lifting equipment association.

**S.W.P.** Safe Working Period. A Safe Working Period is calculated for each electrical hoist unit according to the average operating time of the hoisting equipment, load capacity and class of application. After this period, a general service carried out by the constructor is necessary.

**Class of operation.** According to FEM classification, two fundamental criteria must be taken into account: the type of duty and the class of duty (according to average daily operation time average load).

**ISO standard.** Classes of operation can also be defined according to ISO grouping (1Am =M4, 2m =M5, 3m =M6, etc.).

**Type of duty.**

- **Light service.** Equipment rarely subject to maximum load and frequently to very little load.
- **Medium service.** Equipment rarely subject to maximum load and frequently to very little load.
- **Heavy service.** Equipment frequently subject to maximum load and frequently to medium load.
- **Very heavy service.** Equipment frequently subject to maximum or near maximum load.

Average daily operating time in hours				≤ 0,5		≤ 1		≤ 2		≤ 4		≤ 8		≤ 16	
Class of duty				V0,25	T2	V0,5	T3	V1	T4	V2	T5	V3	T6	V4	T7
Type of service	1	L1	Light					1Bm	M3	1Am	M4	2m	M5	V4	M6
	2	L2	Medium			1Bm	M3	1Am	M4	2m	M5	3m	M6		
	3	L3	Heavy	1Bm	M3	1Am	M4	2m	M5	3m	M6				
	4	L4	Very heavy	1Am	M4	2m	M5	3m	M6						
Group								1Bm	M3	1Am	M4	2m	M5	3m	M6
Duty factor**								25%		30%		40%		50%	
Number of start-ups per hour								150		180		240		300	

F.E.M. 9511 standard classification      ISO standard classification.      \* Operating factor in % =  $\frac{\text{Hoisting time} + \text{Lowering time}}{\text{Hoisting time} + \text{Idle time} + \text{Lowering time} + \text{Idle}} \times 100$

**EUROSTYLE®**

Range of jib cranes mounted on a wall or on a column, with total or partial rotation capability, manual or motorized.

### Choosing the jib cranes that is most adequate for your needs

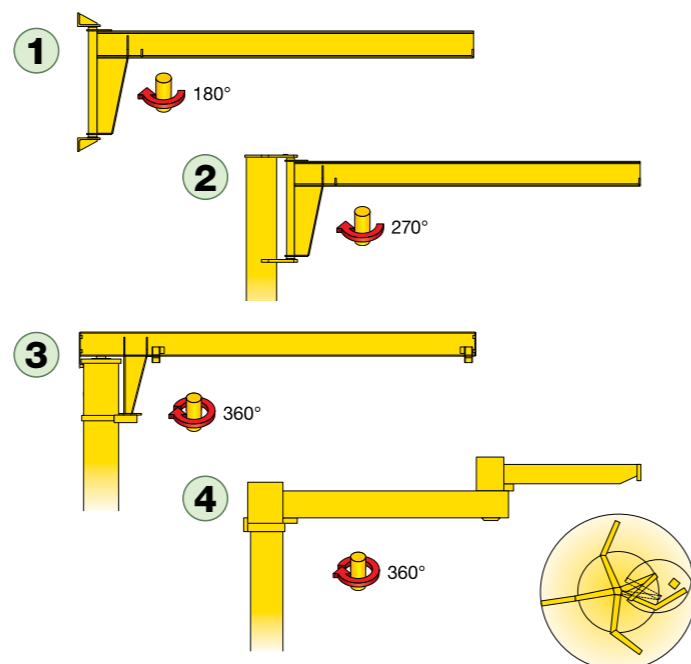
Jib cranes, whether they are mounted on a wall or on a column, are intelligent and inexpensive handling systems that do not require modification of the building structure in which they are being installed. They don't take up much space but they allow transporting goods on a three-dimensional plane.

Useful in any industrial sector: foundries, boiler works, mechanical works, paper factories, etc. They are the ideal complement for the traveling cranes used in every section of an industrial plant. They increase in autonomy and effectiveness of each workstation.

#### 4 kinds of jib cranes is offered by Verlinde

1. The wall-mounted jib crane fitted onto a wall or a post, able to service a 180° section over a span up to 8 meters.
2. The jib crane mounted onto a column, with partial rotation capability and totally independent from the building, anchored to the ground. It can service a work area of up to 270° over a span up to 8 meters.
3. The rotating jib cranes mounted onto a column, is the most complete: it handles from 125 to 10,000kg. over an area with a span up to 12 meters.
4. Verlinde's "TEMPLIER" articulated jib crane easily handles loads from 50 to 1,000kg, over a 5 to 2 m span, almost full circle, and practically no dead space (the articulated arm allows working around obstacles).

For others requests, please consult us.



#### Adapted lifting devices



**VHR**  
manual chain hoist.  
Capacity from 250 to 5,000kg.



**EUROCHAIN VR**  
electric chain hoist.  
Capacity from 63 to 10,000kg.



**EUROLIFT BH**  
electric belt hoist.  
Capacity from 63 to 5,000kg.



**EUROBLOC VT**  
electric wire rope hoist.  
Capacity from 800 to 80,000kg.

#### Electric rotation

Upon request, VERLINDE will provide electric rotation capabilities (VFM jib cranes) required depending on load capacity, span, rotation torque, operating rhythm, etc.

#### Special manufacturing & adaptation

Jib cranes for heights and span that are greater than the standard features.

- Manual rotation controlled by means of a wheel and endless chain.
- Jib cranes with 2 beams.
- Telescopic jib cranes.

**Wall-mounted Jib Cranes**

These are the most inexpensive jib cranes if you have a wall or a post that is strong enough, close to the workstation it will service. The height available under the iron beam is only limited by the height of the building itself.

The main feature is the arm: to ensure easy rotation, the arm is articulated in the two captive hinges in the two projecting support members that make up the anchor plate.

## VAT

**Loads of 125 to 2,000kg.**  
**Span from 2 to 8 meters according load.**



#### Description

- Wall jib crane for indoor use, 180° rotation, with overbraced beam.
- This type of jib crane cannot be motorized.
- Attached with M24, 10.9 grade bolts (not provided).
- Protection: 3-layer system.
- RAL 1028 yellow polyurethane finish.
- Maximum hoisting speed = 16m/min.

#### Options

- Hoist power supply cable.
- Lockable main switch.
- Standpipe.
- Rotation slowing device (adaptable without welding or mechanical intervention).
- Hot dip galvanizing (contact us).
- Rotation stops to weld onto the assembly.
- Single- or multi-position rotation lock.
- Outdoor use.
- Electric or manual hoist.

## VATS

**Loads of 63 to 2,000kg.**  
**Span from 2 to 8 meters according load.**



#### Description

- Hollow-section wall jib crane for indoor use, 180° rotation, with overbraced beam.
- Attached with M24, 10.9 grade bolts (not provided).
- Protection: 3-layer system.
- RAL 1028 yellow polyurethane finish.
- Maximum hoisting speed = 16m/min.

#### Options

- Lockable main switch.
- Standpipe.
- Rotation slowing device (adaptable without welding or mechanical intervention).
- Rotation stops to weld onto the assembly.
- Single- or multi-position rotation lock.
- Electric or manual hoist.

## VERLINDE Wall-mounted Jib Cranes

### VATAL

Loads of 63 to 2,000kg.  
Span from 2 to 8 meters according load.



#### Description

- Light construction.
- EUROSISTEM ALU hollow-section, aluminum wall jib crane for indoor use, 180° rotation, with overbraced beam.
- This type of jib crane cannot be motorized.
- Horizontal and vertical reactions are understood to be under nominal load.
- RAL 1028 yellow polyurethane finish for the attachment.
- Attached with M24, 10.9 grade bolts (not provided).
- Hoist trolley provide.
- Power supply cable provided.
- Maximum hoisting speed = 16 m/min.

#### Options

- Lockable main switch.
- Rotation slowing device (adaptable without welding or mechanical intervention).
- Rotation stops to bolt.
- Single or multi-position rotation lock.
- Electric or manual hoist.

### VAI

Loads of 125 to 4,000kg.  
Span from 2 to 7 meters according load.



#### Description

- Wall jib crane for indoor use, 180° rotation, with underbraced beam.
- Uses M24, 10.9 grade bolts (not provided) for attachments N°1 and N°2, and M27, 10.9 grade bolts (not provided) for attachments N°5 and N°6.
- Protection: 3-layer system.
- RAL 1028 yellow polyurethane finish.
- Maximum hoisting speed = 16m/min.

#### Options

- Hoist power supply cable + lockable main switch.
- Standpipe.
- Rotation slowing device (adaptable without welding or mechanical intervention).
- Hot dip galvanizing (contact us).
- Rotation stops to weld onto the assembly.
- Single or multi-position rotation lock.
- Outdoor use.
- Motorization.
- Electric or manual hoist.

## VERLINDE Overbraced column-mounted Jib Cranes

### VFT

Loads from 125 to 2,000kg.  
Span from 2 to 8 meters according load.  
Height under beam: 2.5m.



#### Options

- Installation template + anchor rods (or base plate for chemical anchors, keeping its limitations in mind).
- Rotation slowing device (adaptable without welding or mechanical intervention).
- Rotation stops to weld onto the assembly, or adjustable.
- Single - or multi-position rotation lock.
- Electric or manual hoist.

#### Description

- Standard underbeam clearance = 2.5m, adjustable higher or lower, accordingly modifying overall height measurement; for clearance higher than 4m, contact us.
- EUROSISTEM ST hollow-section pillar jib crane for indoor use, partial 270° rotation, with overbraced beam.
- This type of jib crane cannot be motorized.
- Theoretical deflection under nominal load = approximately 1/250th of the span + height, without exceeding 1/100th of the span in itself.
- The Maximum Moment (MM) is given as a rough guide and under nominal load.
- Protection: 3-layer system.
- RAL 1028 yellow polyurethane finish.
- Hoist trolley provided.
- Power supply cable provided.
- Maximum hoisting speed = 16m/min.

### VFTS

Loads from 63 to 2,000kg.  
Span from 2 to 8 meters according load.  
Height under beam: 2.5m.



#### Options

- Installation template + anchor rods (or base plate for chemical anchors, keeping its limitations in mind).
- Hoist power supply cable.
- Lockable main switch.
- Rotation slowing device (adaptable without welding or mechanical intervention).

#### Description

- Pillar jib crane for indoor use, partial 270° rotation, with overbraced beam.
- This type of jib crane cannot be motorized.
- Theoretical deflection under nominal load = approximately 1/250th of the span + height, without exceeding 1/100th of the span in itself.
- Protection: 3-layer system.
- RAL 1028 yellow polyurethane finish.
- Maximum hoisting speed = 16m/min.

- Hot dip galvanizing (contact us).
- Rotation stops to weld onto the assembly, or adjustable.
- Single or multi-position rotation lock.
- Electric or manual hoist.
- Outdoor use.

## VERLINDE Overbraced column-mounted Jib Cranes

### VFTAL

**Loads from 63 to 2,000kg.**  
**Span from 2 to 8 meters according load.**  
**Height under beam: 2.5m.**



#### Options

- Installation template + anchor rods (or base plate for chemical anchors, keeping its limitations in mind).
- Hoist power supply cable.
- Lockable main switch.
- Rotation slowing device (adaptable without welding or mechanical intervention).

#### Description

- Pillar jib crane for indoor use, partial 270° rotation, with underbraced beam.
- This type of jib crane cannot be motorized.
- Theoretical deflection under nominal load = approximately 1/250th of the span + height, without exceeding 1/100th of the span in itself.
- The Maximum Moment (MM) is given as a rough guide and under nominal load.
- Protection: 3-layer system, RAL 1028 yellow polyurethane finish.
- Maximum hoisting speed = 16m/min.

- Hot dip galvanizing (contact us).
- Rotation stops to weld onto the assembly, or adjustable.
- Single or multi-position rotation lock.
- Outdoor use.
- Electric or manual hoist.

### VFI

**Loads from 125 to 2,000kg.**  
**Span from 2 to 7 meters according load.**  
**Height under beam: 3m.**



#### Options

- Lockable main switch.
- Installation template + anchor rods (or base plate for chemical anchors, keeping its limitations in mind).

#### Description

- Standard underbeam clearance = 2,5m, adjustable higher or lower, accordingly modifying overall height measurement ; for clearance higher than 4m, contact us.
- EUROSISTEM ALU hollow-section, aluminum pillar jib crane for indoor use, partial 270° rotation, with overbraced beam.
- This type of jib crane cannot be motorized.
- Theoretical deflection under nominal load = approximately 1/250th of the span + height, without exceeding 1/100th of the span in itself.
- RAL 1028 yellow polyurethane finish for the pillar.
- Hoist trolley provide.
- Power supply cable provided.
- Maximum hoisting speed = 16 m/min.

- Rotation slowing device (adaptable without welding or mechanical intervention).
- Adjustable rotation stops.
- Single or multi-position rotation lock.
- Electric or manual hoist.

## VERLINDE Full slewing column mounted Jib Cranes

### VFP

**Manual rotation.**  
**Loads from 125 to 10,000kg.**  
**Span from 2 to 12 meters according load.**  
**Height under beam: 3m.**



#### Description

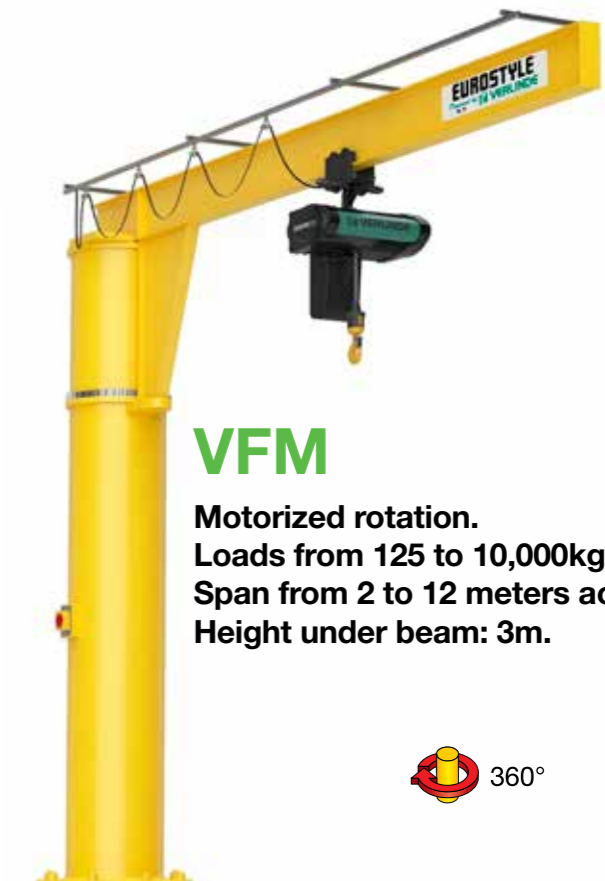
- Full-rotation pillar jib crane with underbraced beam.
- Theoretical deflection under nominal load = approximately 1/250th of the span + height, without exceeding 1/100th of the span in itself.
- Protection: 3-layer system.
- RAL 1028 yellow polyurethane finish.
- Maximum hoisting speed = 16m/min.

#### Options

- Installation template + anchor rods (or base plate for chemical anchors, keeping its limitations in mind).
- VFM Motorization on main roller (indoor use).
- VFM Top-mounted motorization (outdoor use).
- Hoist power supply cable.
- Lockable main switch.
- 4-ring electrical collector, for unlimited rotation.
- Hot dip galvanizing (contact us).
- Rotation stops to weld onto the assembly.
- Single- or multi-position rotation lock.
- Outdoor use.
- Electric or manual hoist.

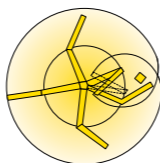
### VFM

**Motorized rotation.**  
**Loads from 125 to 10,000kg.**  
**Span from 2 to 12 meters according load.**  
**Height under beam: 3m.**



## VERLINDE “Templier” Jib Cranes with articulated arms

The “Templier” articulated jib crane by VERLINDE can easily handle loads from 50 to 1,000kg, over a 5 to 2m span, almost full circle, and practically no dead space (the articulated arm allows working around obstacles).



### Jib crane mounted on column.

Entirely independent from the building, anchored to the ground. This crane can serve an almost circular working area with a maximum radius of 5 meters.

## Templier TC

Premium

Loads from 50 to 1,000kg.  
Span from 2 to 5 meters according load.  
Height under upper lifting hook: 3m.



### Description

- Articulated wall jib crane for indoor use, 360° rotation for arm 1 and 300° rotation for arm 2.
- Protection: 3-layer system.
- RAL 1028 yellow polyurethane finish.
- Maximum hoisting speed = 16m/min.

### Options

- Hoist power supply cable + lockable main switch.
- Standpipe.
- Hot dip galvanizing (contact us).
- Rotation stops to weld onto the assembly.
- Single- or multi-position rotation lock (arm 1 only).
- Electric or manual hoist.
- Outdoor use.

## Templier TCC

ECO

Loads from 125 to 250kg.  
Span from 2 to 5 meters according load.  
Height under upper lifting hook: 3m.



### Description

- Articulated pillar jib crane for indoor use, 270° rotation for arm 1 and 300° rotation for arm 2.
- This type of jib crane cannot be motorized.
- Theoretical deflection under nominal load = approximately 1/250th of the span + height, without exceeding 1/100th of the span in itself.
- Protection: 3-layer system, RAL 1028 yellow polyurethane finish.
- Maximum hoisting speed = 16m/min.

### Options

- Hoist power supply cable.
- Lockable main switch.
- Hot dip galvanizing (contact us).
- Butées de rotation à souder au montage.
- Rotation stops to weld onto the assembly, or adjustable, on 1 arm.
- Outdoor use.
- Electric or manual hoist. Single- or multi-position rotation lock (arm 1 only).
- Electric or manual hoist.
- Outdoor use.

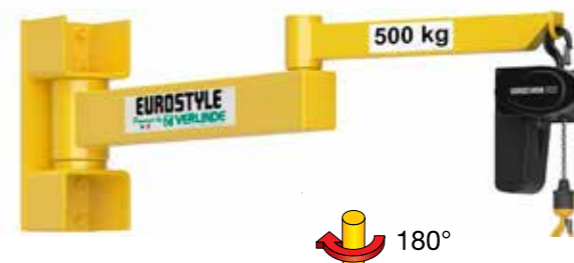
### Jib crane mounted on bracket.

This crane serves an almost circular working area with a radius of 5 meters (secured to a wall or mast post).

## Templier TA

Premium

Loads from 500 to 1,000kg.  
Span from 2 to 5 meters according load.



### Description

- Articulated wall jib crane for indoor use, 180° rotation for arm 1 and 300° rotation for arm 2.
- Protection: 3-layer system.
- RAL 1028 yellow polyurethane finish.
- Maximum hoisting speed = 16m/min.

### Options

- Hoist power supply cable + lockable main switch.
- Standpipe.
- Hot dip galvanizing (contact us).
- Rotation stops to weld onto the assembly.
- Single- or multi-position rotation lock (arm 1 only).
- Electric or manual hoist.
- Outdoor use. Outdoor use.

## Templier TCA

ECO

Loads from 125 to 250kg.  
Span from 2 to 5 meters according load.



### Description

- Articulated wall jib crane for indoor use, 180° rotation for arm 1 and 300° rotation for arm 2.
- Attached with M24, 10.9 grade bolts (not provided).
- Protection: 3-layer system.
- RAL 1028 yellow polyurethane finish.
- Maximum hoisting speed = 16m/min.

### Options

- Hoist power supply cable + lockable main switch.
- Standpipe.
- Rotation slowing device (adaptable without welding or mechanical intervention).
- Option of a slowing device on each arm.
- Hot dip galvanizing (contact us).
- Rotation stops to weld onto the assembly.
- Single- or multi-position rotation lock (arm 1 only).
- Electric or manual hoist.
- Outdoor use. Outdoor use. Outdoor use.

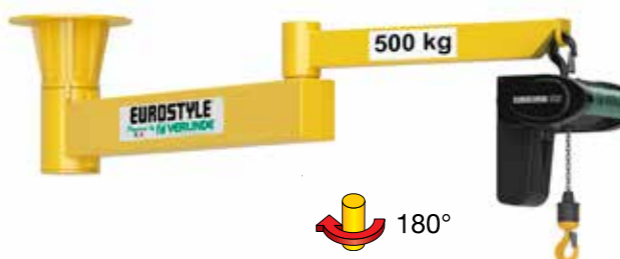
### Jib crane mounted on roof.

This crane can serve an almost circular working area with a radius of 5 meters (secured to a ceiling or members of the structural frame of the building).

## Templier TSR

Premium

Loads from 500 to 1,000kg.  
Span from 2 to 5 meters according load.



### Description

- Articulated wall jib crane for indoor use, 360° rotation for arm 1 and 300° rotation for arm 2.
- Protection: 3-layer system.
- RAL 1028 yellow polyurethane finish.
- Maximum hoisting speed = 16m/min.

### Options

- Hoist power supply cable + lockable main switch.
- Standpipe.
- Hot dip galvanizing (contact us).
- Rotation stops to weld onto the assembly.
- Single- or multi-position rotation lock (arm 1 only).
- Electric or manual hoist.
- Outdoor use.



## EUROSYSTEM STD

Overhead handling system in steel profile for loads of up to 2,000kg.

### Steel profiles

Load capacity of up to 2,000kg according to profile. The basic component of the overhead handling system is a cold-formed high strength hollow steel profile that provides an extremely uniform surface. The closed structure of the profile makes it possible to keep the inside of the runway clean.

There are 5 sizes in the range of profiles that can be selected depending on the load capacity and the distance between the suspension points:

• **STD II-H-R** is the strengthened version of the STD II profile with integrated power supply (5 pole conductor).

• **STD II-H** is the strengthened version of the STD II profile for loads of up to 3,200kg.

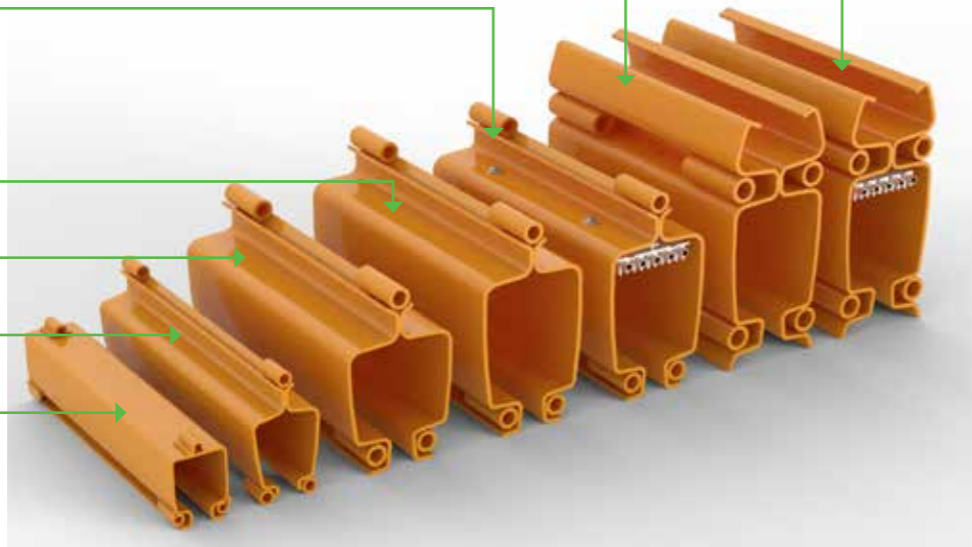
• **STD II-R** is the STD II profile version with integrated power supply (5 pole conductor).

• **STD II** for loads of up to 2,000kg.

• **STD II-L** for loads of up to 1,000kg.

• **STD I** for loads of up to 500kg.

• **STD 100** for loads of up to 125kg.



### Numerous possibilities

This range of profiles associated with other components like suspensions, manual or electric travelling trolleys and cross travel trolleys enable many lifting solutions to be implemented.

- Monorail tracks.
- Runways.
- Single girder overhead cranes.
- Double-beam overhead cranes.
- Telescopic beams.
- Single or complete circuit systems with change of travel direction by switch or multi-directional turntable.

### Undeniable advantages

- The loads are easy to handle, thanks to an excellent rolling coefficient.
- Numerous types of fixation, adaptable to any structure.
- Installations are pleasing to the eye.
- The load on the bearing structure is kept to a minimum through the pendular design of the system.
- Monorail tracks, runways and circuits easily extended thanks to the system's modularity.
- Maintenance is practically zero.
- Great flexibility.
- Minimum loss of headroom.
- Installation and fixation by simple bolting.

## EUROSYSTEM ALD

Aluminium hollow profile for overhead handling system with loads of 60 to 2,000kg.

### Profiles

Load capacity of up to 2,000kg according to profile. The basic component of the overhead handling system is a cold-formed high strength hollow steel profile that provides an extremely uniform surface. The closed structure of the profile makes it possible to keep the inside of the runway clean.

There are 4 sizes in the range of profiles (2 of them available with integrated power supply), that can be selected depending on the load capacity and the distance between the suspension points:

• **A 22 R** is the strengthened version of the ALD A22 profile with integrated power supply (5 pole conductor).

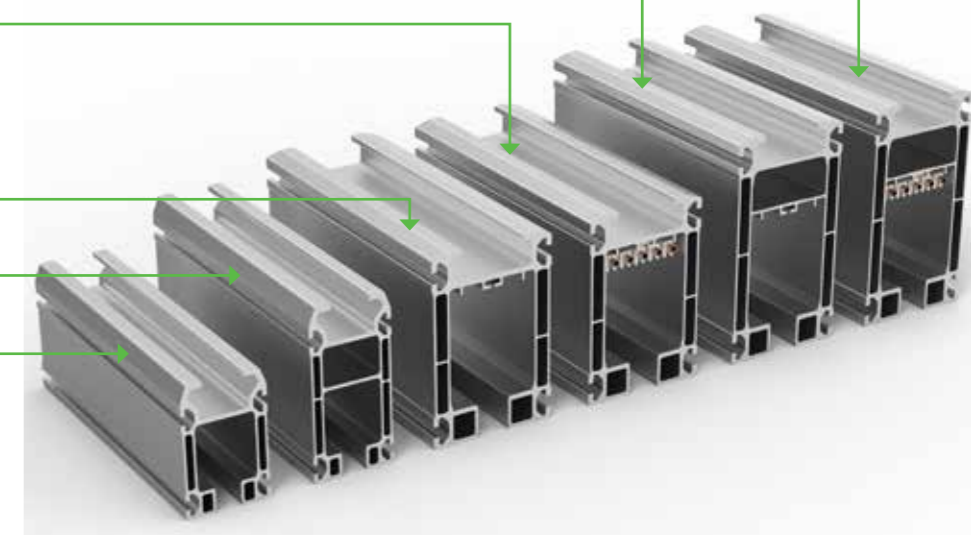
• **A 22** for loads of up to 2,000kg.

• **A 18 R** is the strengthened version of the ALD A18 profile with integrated power supply (5 pole conductor).

• **A 18** for loads of up to 1,000kg.

• **A 16** for loads of up to 500kg.

• **A 12** for loads of up to 500kg.



### Numerous possibilities

This range of profiles associated with other components like suspensions, manual or electric travelling trolleys and cross travel trolleys enable many lifting solutions to be implemented.

- Monorail tracks.
- Runways.
- Single girder overhead cranes.
- Double-beam overhead cranes.
- Telescopic beams.

### Undeniable advantages

Eurosystem ALD Aluminium represents a new generation of hollow profile handling systems. This innovative solution presents the combined advantages of conventional steel and aluminium hollow profile. Steel and aluminium profile may be combined. Similar advantages coming from Steel with benefits from Aluminium.

- **ERGONOMIC.** Light rails means users can very easily and effortlessly handle heavy and cumbersome loads.
- **ACCURATE.** Accuracy is ensured through high quality manufacture and smooth movements.
- **ANTICORROSION.** The aluminium profiles are externally and internally anodised.
- **SAFETY.** The beam is guaranteed without welding.
- **TECHNOLOGICAL.** The beam is the result of the latest innovations in cold extrusion and structure optimisation.
- **PRACTICAL.** The beam is compatible with all ITEM standard accessories.
- **LASTING.** Strong resistancy to wear and tear is the result of anodisation and the roller materials.
- **SILENCE.** Operates silently due to the precise manufacture of the movement surface.

**EUROSYSTEM STD & ALD**

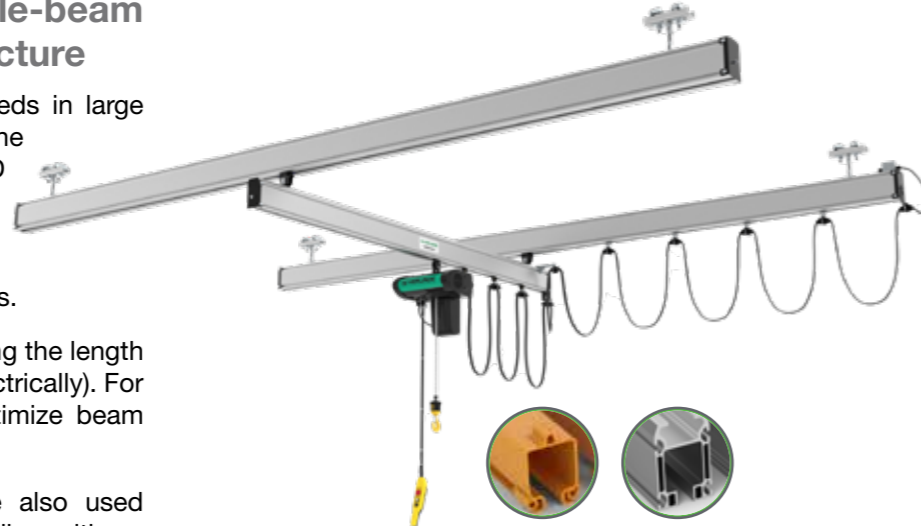
Overhead handling system in steel and alu profile for loads of up to 2,000kg.

### Suspended or encastred single-beam crane, rigid or articulated structure

Practical solution designed for handling needs in large facilities. Reduced approach distances and the compactness of EUROSYSTEM STD and ALD components enable optimization of working space. This characteristic enables access for handling to non-rectangular spaces and to areas inaccessible to conventional systems.

Suspended on trolleys, the girder travels along the length of the runway profiles (driven manually or electrically). For longer spans, rigid connections enable optimize beam travel.

EUROSYSTEM STD and ALD profiles are also used as runways and can be attached to the ceiling with an appropriate suspension system.



**1** Single-beam suspension crane with manual travel and cross-travel, **articulated structure**.



**2** Single-beam suspension crane, electric travel and cross-travel, **rigid structure**.



**3** Single-beam encastred crane with electric travel and cross-travel, **rigid structure**.

### Double-beam suspended or encastred crane, rigid or articulated structure

For much heavier loads over wide spans or for frequent manipulation cycles, the EUROSYSTEM STD and ALD double-beam crane will be ideal for your lifting and handling requirements.

The design of the encastred hoistbearing trolley travelling between beams enables a minimum loss of headroom. The crane also enjoys great travel flexibility through the use of trolleys with synthetic rollers on ball bearings inside the profiles.

Travel is achieved either by pushing the load or through the use of a motorized trolley (recommended for heavy loads and long spans).



**4** Double-beam suspension crane with manual travel and cross-travel, **articulated structure**.



**5** Double-beam suspension crane, electric travel and cross-travel, **rigid structure**.

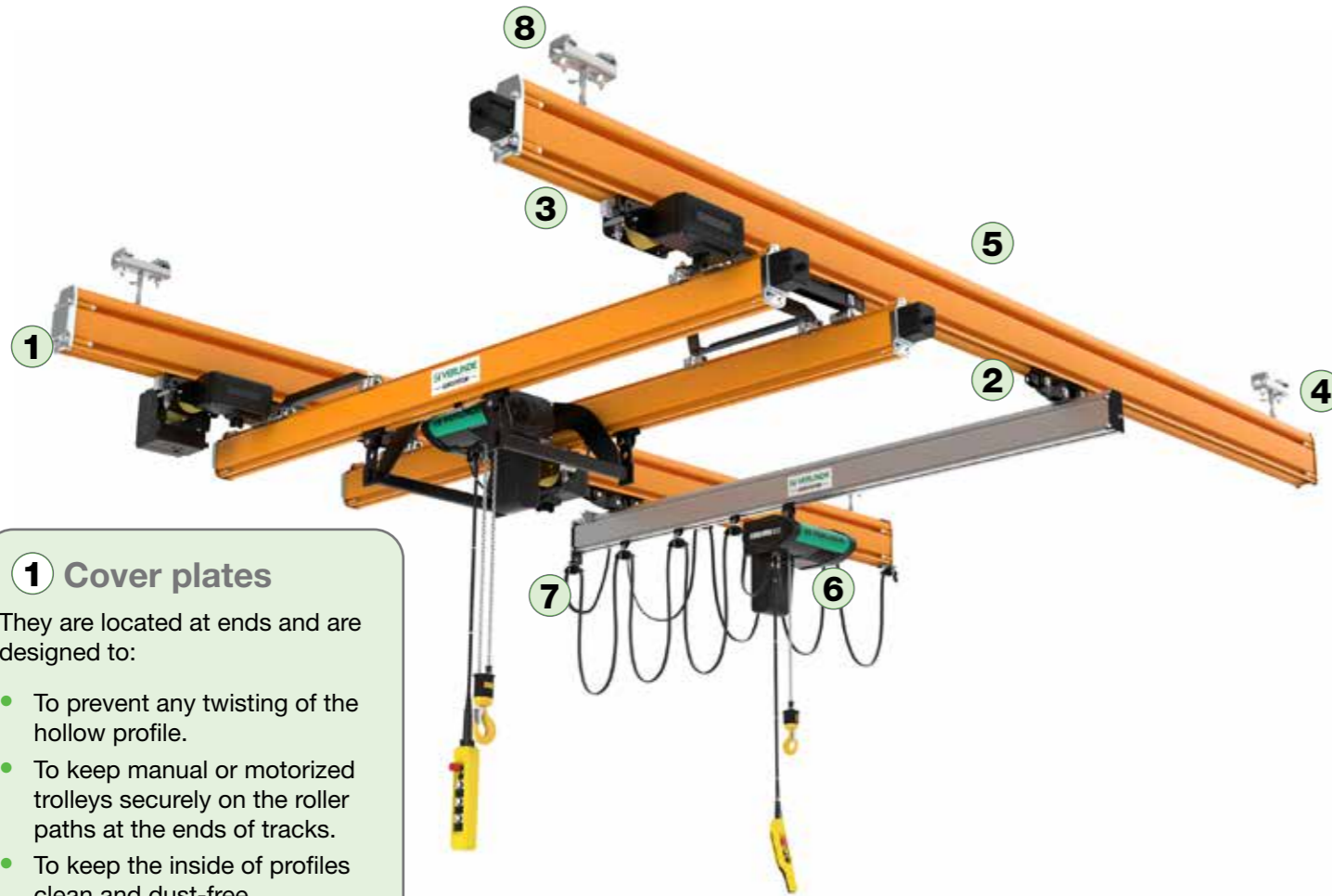


**6** Double-beam encastred crane with electric travel and transfer, **rigid structure**.

Type of constructions:	Item	EUROSYSTEM STD	EUROSYSTEM ALD
Single beam suspended crane with articulated structure	<b>1</b>	✓	✓
Single beam suspended crane with rigid structure	<b>2</b>	✓	✓
Single beam encastred crane with rigid structure	<b>3</b>	✓	
Double beam suspended crane with articulated structure	<b>4</b>	✓	✓
Double beam suspended crane with rigid structure	<b>5</b>	✓	✓
Double beam encastred crane with rigid structure	<b>6</b>	✓	

## EUROSYSTEM STD & ALD

Overhead handling system in steel and alu profile for loads of up to 2,000kg.



### 1 Cover plates

They are located at ends and are designed to:

- To prevent any twisting of the hollow profile.
- To keep manual or motorized trolleys securely on the roller paths at the ends of tracks.
- To keep the inside of profiles clean and dust-free.

### 2 Trolleys

Any system can be equipped with trolleys in order to ensure travel and transfer movement of hoist and suspension crane.

The range of available stand-alone trolleys is very comprehensive and will meet all your requirements:

- Single, double or articulated manual trolleys.
- Simple, double or articulated motorized trolleys.



The contact surface with the internal part of the profile has been reduced to obtain a remarkable rolling coefficient: thus ensuring noiseless and effortless movement. The trolley rollers are synthetic for reasons of minimum routine maintenance and excellent resistance to wear. Furthermore, they have a shockdampening effect and remain noiseless, even at high travel speeds.

Through the modularity of the EUROSYSTEM STD and ALD overhead handling system, a manual trolley can be replaced at a later date by an electric trolley.

The electric trolleys are fitted with solid rubber drive wheels to obtain high torque drive and a low operating sound level.

### 3 Hollow profiles assembly

The assembly of the profiles is done with connection bolts and connection parts with adapted locating features.

The contact surface with the internal part of the profile has been reduced to obtain a remarkable rolling coefficient: thus ensuring noiseless and effortless movement. The trolley rollers are synthetic for reasons of minimum routine maintenance and excellent resistance to wear. Furthermore, they have a shockdampening effect and remain noiseless, even at high travel speeds.

Through the modularity of the EUROSYSTEM STD and ALD overhead handling system, a manual trolley can be replaced at a later date by an electric trolley.

The electric trolleys are fitted with solid rubber drive wheels to obtain high torque drive and a low operating sound level.

### 3 Hollow profiles assembly

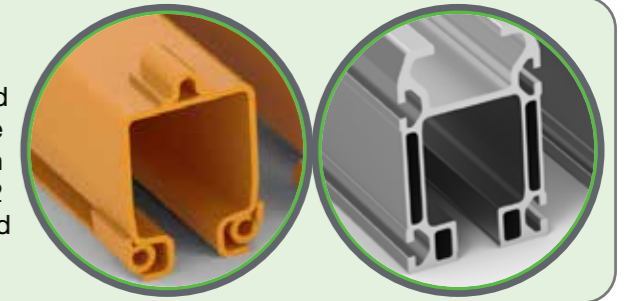
The assembly of the profiles is done with connection bolts and connection parts with adapted locating features.

### 4 Threaded rods

Threaded rods are inserted on suspension systems to facilitate height adjustment.

### 5 Profiles

There are 5 sizes in the range of profiles that can be selected depending on the load capacity and the distance between the suspension points. All the profiles receive an anti-corrosion protective treatment and then a coat of finishing paint (RAL 2002 or other RAL in option) (cataphoresis process) or are galvanized (option).



### 6 Manual, electric or pneumatic lifting units

Hand chain hoist VHR for loads of 250 to 5,000kg: the chain sprocket and gears are machined to provide smoother, more efficient operations and smoother lifting manoeuvres. VHR's compact design offers safety together with reduced weight. This hoist is ideal for construction, assembly and maintenance applications.

Lifting functions are fulfilled by **EUROCHAIN** hoists with a wide range of load capacities and lifting speeds. These hoists can be equipped with either a manual or an electric trolley for horizontal movement.

- Load capacity from 63 to 2,000kg.
- Lifting height from 3 meters (standard) and up to 30m.



- Two lifting speeds.
- A number of optional features are available for these hoists (remote control system, hook version and stainless steel chain, manipulator on hook, speed variation,...).



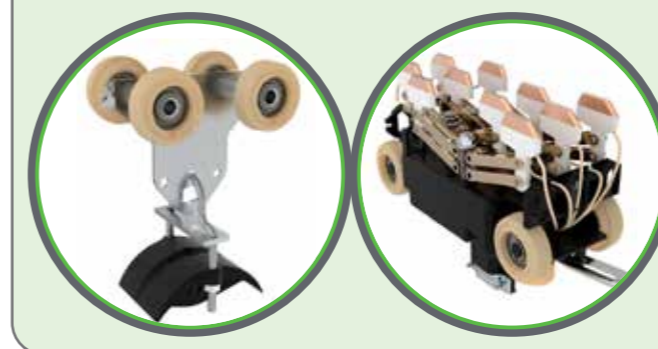
**EQUIBLOC AIR** is delivered with the following standard equipment:

- Lift and lowering control circuit.
- 6m of cable with hook.
- Spiral flexible control conduit,
- Valve-box type control interface.
- Proportional lift and lowering control unit with load balancing system.
- With safety valve to keep pressure in tank if the control tube is cut.

### 7 Power feed systems

Two types of power feed systems are available:

- As exterior flat cables to the profile (daisy chain) with specific cable bearing trolleys for hollow profiles
- Power feed integrated in profile (5 pole conductor).



### 8 Suspensions



They allow fitting the light crane system to the support structure. Several types of suspensions are available according to the type of profile used, and the type of structure supporting the system. Thanks to their design (selflocking parts, articulated structure, easy adjustments, etc.).

EUROSYSTEM STD and ALD suspensions allow greater flexibility when being installed, prevent internal pressure and balance any possible irregularities of the support structure. An antifriiction system of synthetic material is included on the flexible coupling to reduce the noise level and reduce routine maintenance of joints to a minimum.